

1 Find a Location for Onyx EZR and Mount it

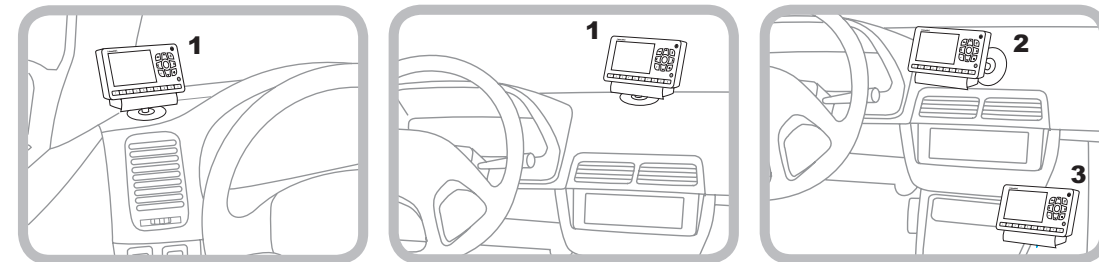
Select either the **Dash Mount** method or the **Vent Mount** method for your Onyx EZR. You will need a phillips-head screwdriver to complete the installation.

IMPORTANT! To make the cable connections easier, wait until after you have connected all the cables to the dock before you attach the dock to the dash or to a vent.

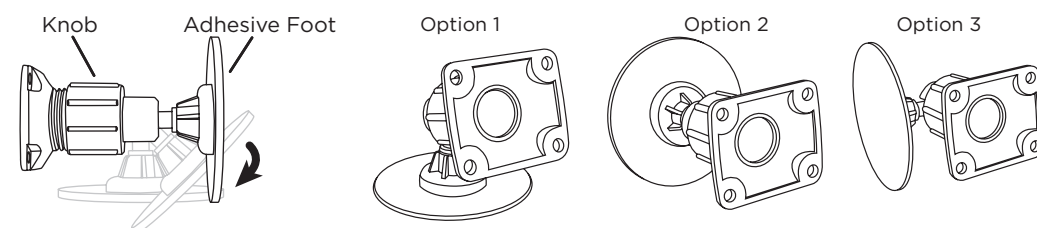
Dash Mount Method:

IMPORTANT! The air temperature needs to be at least 60°F to install the Dash Mount. If needed, turn on the heater in your vehicle.

A. Select a flat surface for the Dash Mount with ample room for Onyx EZR. Avoid mounting on leather surfaces. Choose a location that doesn't interfere with the driver's vision or access to driving controls, one that won't interfere with the deployment of airbags or other safety equipment, and makes Onyx EZR easily accessible for operation. (Airbag locations are typically marked with "SRS" logos.)



B. Orient the adhesive foot so that Onyx EZR is easily accessible. Loosen the knob and adjust the adhesive foot to position **1**, **2**, or **3**, and then tighten it.



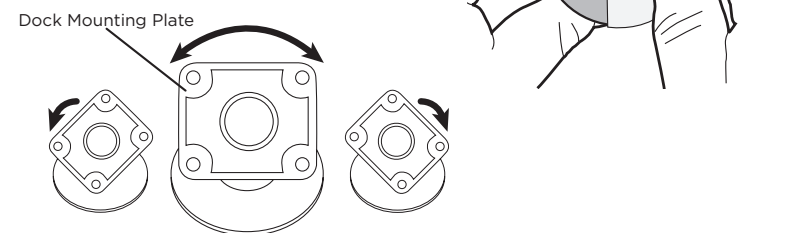
C. Attach the Dash Mount to the *PowerConnect* Vehicle Dock using the 4 provided screws.

D. Before you attach the Dash Mount to the dash, skip ahead and finish the remainder of the vehicle installation so that the cables are attached to the dock.

E. Once the cables have been attached to the dock, clean the mounting surface in the vehicle with the alcohol preparation pad and let it dry thoroughly.

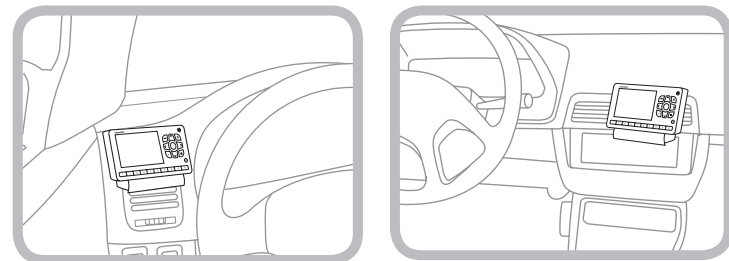
F. Once the surface is dry, remove the adhesive liner. Press and hold the Dash Mount in place for 30 seconds. Allow the adhesive to cure for 2-4 hours.

G. You can tilt the dock mounting plate in your preferred direction.



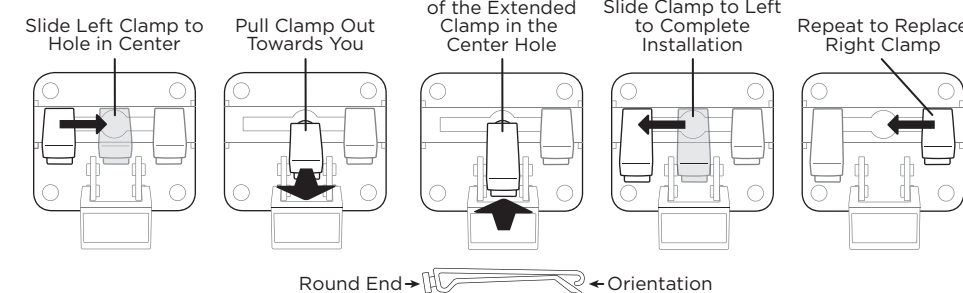
Vent Mount Method:

A. Select a vent with ample room for Onyx EZR, one that won't interfere with the deployment of airbags or other safety equipment, and makes Onyx EZR easily accessible for operation. (Airbag locations are typically marked with "SRS" logos.)



B. Some vents have recessed louvers. If yours are recessed, remove the regular vent clamps and install the extended vent clamps.

Vent Mount Rear View

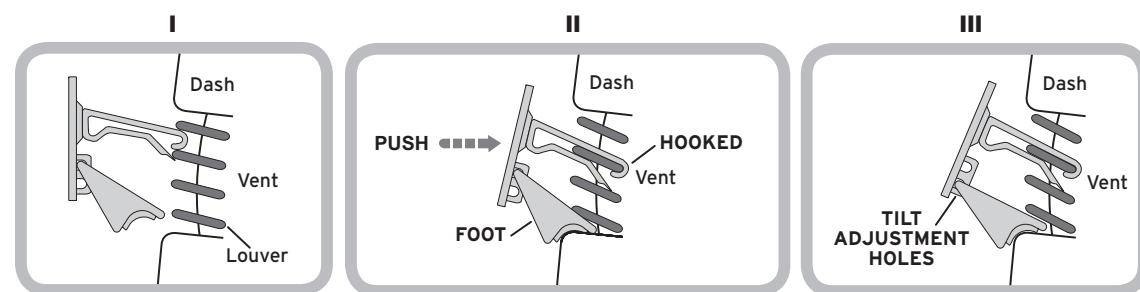


C. Attach the Vent Mount to the *PowerConnect* Vehicle Dock using the 4 provided screws.

D. Before you attach the Vent Mount to the vent, skip ahead and finish the remainder of the vehicle installation so that the cables are attached to the dock.

E. Once the cables have been attached to the dock, install the Vent Mount onto the vehicle vent. (Note that for clarity the illustrations below do not show the Vehicle Dock attached to the Vent Mount.)

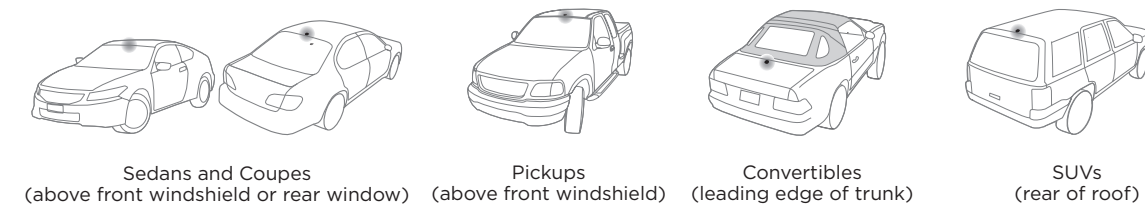
- Insert the vent mount into the vent opening.
- Push until hooked on the rear of the vent louver. Rest the foot against the bottom of the vent.
- If necessary, adjust the tilt of the Vent Mount by repositioning the foot to a different tilt adjustment hole.



2 Mount the Magnetic Mount Antenna

A. Mount the Magnetic Mount Antenna outside your vehicle, on a clean and dry horizontal surface that will always face the sky.

B. Choose the location for the antenna according to your type of vehicle. Center it between the left and right sides, and away from other antennas.



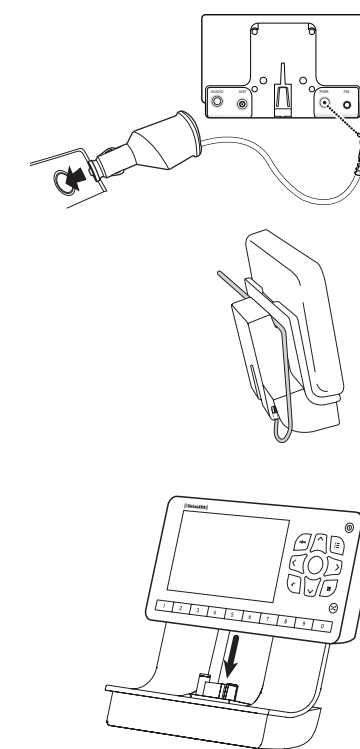
TIP: Use the Alcohol Prep Pad to clean the surface.

4 Connect the PowerConnect Power Adapter

A. Insert the *PowerConnect* Power Adapter into your vehicle's cigarette lighter or power adapter socket. Plug the other end into the **red PWR** connector at the rear of the *PowerConnect* Vehicle Dock.

B. Use the wire guide on the top of the dock to organize the wires connected to the dock.

C. Place Onyx EZR into the dock and press the **Power** button.



3 Route the Antenna Cable

NOTE: These instructions are for a sedan or coupe where the antenna is mounted above the front windshield. The Onyx EZR User Guide (with Vehicle Kit) has detailed antenna cable routing instructions for all types of vehicles. Go to siriusxm.ca/userguides for the User Guide.

A. Tuck the antenna cable under the windshield rubber molding and run it to the nearest corner.

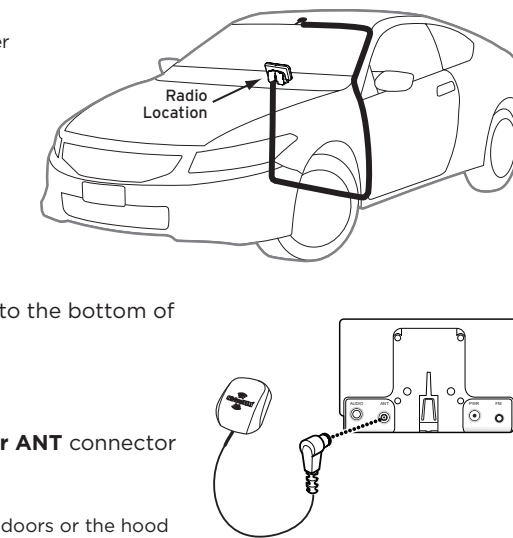
B. Route the cable out of the molding and into the rubber weather stripping around the door opening.

C. Lift the weather stripping. Tuck and run the cable inside it to the bottom of the door opening. Replace the weather stripping.

D. Pull the cable out and route it to Onyx EZR.

E. Plug the Magnetic Mount Antenna connector into the **silver ANT** connector at the rear the *PowerConnect* Vehicle Dock.

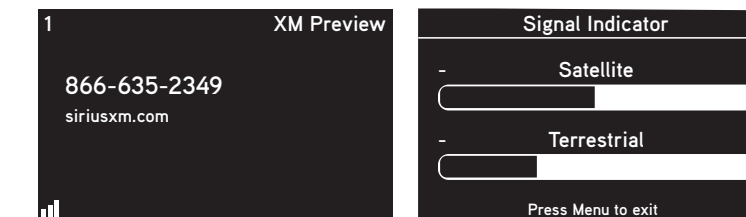
TIP: Include enough slack in your routing to accommodate open doors or the hood lid. Coil any excess cable in a hidden location and keep it away from any vehicle pedals or controls.



5 Verify Signal Reception

A. Be sure the vehicle is outside and the antenna has a clear view of the sky.

B. Verify that you are receiving the XM signal. The Onyx EZR Radio should be tuned to XM channel 1, the XM Preview channel. There should be at least two bars on the lower left corner of the screen that denotes antenna signal strength. If not, be sure that you have mounted the antenna on the outside of the vehicle, as shown in step 2, and that the vehicle is parked outdoors with a clear view of the sky. Move the vehicle away from any obstructed area, for example, if you are parked in a garage, or parked near a large structure.



C. You can also press **menu** and then press **▼** to scroll to and highlight **Signal Indicator**. Press the **Select** button. The Satellite and Terrestrial bars show the strength of the signal being received. If the signal reception is good, press and hold **menu** to return to XM channel 1, the XM Preview channel.

Quick Start Guide



Canadian Compliance: This Class B digital apparatus complies with Canadian CAN ICES-3 (B)/NMB-3(B). This device complies with Industry Canada license-exempt RSS standard(s). Operation is subject to the following two conditions: (1) this device may not cause interference, and (2) this device must accept any interference, including interference that may cause undesired operation of the device.

Self installation instructions and tips are provided for your convenience. It is your responsibility to determine if you have the knowledge, skills and physical ability required to properly perform an installation. SiriusXM shall have no liability for damage or injury resulting from the installation or use of any SiriusXM or third party products. It is your responsibility to ensure that all products are installed in adherence with local laws and regulations and in such a manner as to allow a vehicle to be operated safely and without distraction. SiriusXM warranties do not cover the installation, removal or reinstallation of any product.

If you experience problems with the operation or performance of your product

DO NOT RETURN THIS PRODUCT TO YOUR RETAILER

Call Customer Care at 1-888-539-7474

6

Connect the Audio

Decide on one of the following in-box audio connection options. You can also refer to "Connect the Audio" in the Onyx EZR User Guide (with Vehicle Kit) for additional audio connection options, such as a cassette adapter or the FM Direct Adapter (FMDA) (both sold separately). Go to siriusxm.ca/guides for the User Guide.

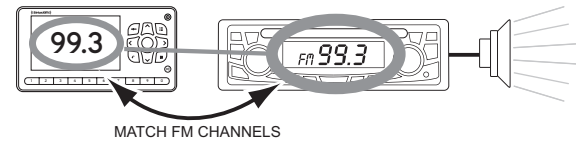
Option 1: Best: Use the provided **Aux In Cable**, if your vehicle's stereo system has an auxiliary input jack.

- Plug one end of the cable into the **green AUDIO** connector at the rear of the PowerConnect Vehicle Dock and the other end into the auxiliary input jack on the vehicle's stereo system.
- Turn on your vehicle's stereo system and set it to play from the auxiliary input source.
- You should hear XM channel 1 through your vehicle's stereo system.
- Go back to Step 1 "Find a Location for Onyx EZR and Mount It" on the opposite side and finish installing the Dash or Vent Mount. Then the installation is complete.

TIP! Refer to your vehicle's owner's manual to find the location of the auxiliary input jack, or consult the vehicle dealer.

Option 2: Good: Use the **PowerConnect** feature of Onyx EZR. PowerConnect plays the XM audio through your vehicle's FM radio.

- Use the SiriusXM FM Channel Finder at www.siriusxm.com/fmchannel. Go to the website and enter your zip code. The Channel Finder will suggest a list of available FM channels in your area. For convenience, write down or print out the list.
- Pick the first FM channel on your list. Tune your vehicle's FM radio to this FM channel.
- Set your Onyx EZR to transmit on the same FM channel that you have selected on your vehicle's FM radio:
 - Press **menu** and then press **▼** to scroll to and highlight **FM Settings**. Press the **Select** button.
 - FM Channels** will be highlighted. If it is not highlighted, press **▼** to scroll to and highlight **FM Channels**. Press the **Select** button.
 - Press **▼** to scroll to and highlight **FM2**. Press the **Select** button.
 - Press **◀** and **▶** to tune in steps of .2, or press **▼** and **▲** to tune in steps of 1 to select the available FM channel you have chosen. Press the **Select** button to select the FM channel.
 - Start Using** will be highlighted. Press the **Select** button.
 - The selected FM channel will be confirmed on the display screen. Press and hold **menu** to return to the main display screen.
- You should now hear XM channel 1 through your vehicle's FM radio. If you are not satisfied with the audio quality, move to the next FM channel on your list and repeat the process. Continue until you have found an FM channel with which you are satisfied.



E. If you are satisfied with the audio quality, go back to Step 1 "Find a Location for Onyx EZR and Mount It" on the opposite side and finish installing the Dash or Vent Mount. Then the installation is complete.

TIP! You may find an FM channel with static or silence on your vehicle's FM radio that does not work with your Onyx EZR. It is possible that some type of inaudible interference is present that prevents reception of the SiriusXM broadcast. Your only options are to use another FM channel or a different audio connection method.

7

Subscribe

You can follow either the general activation and subscription process or use the on-board activation guide to activate your Onyx EZR and subscribe to the XM service.

General activation and subscription process:

- Make sure your Onyx EZR is turned on, receiving the XM signal, and tuned to XM channel 1 so that you can hear XM audio.
- Make a note of your XM Radio ID. You can find it by selecting **Radio ID** in menu items, by tuning to channel 0, on a label on the bottom of the gift box, and on the label on the back of your Onyx EZR.

NOTE! The XM Radio ID does not use the letters I, O, S, or F.

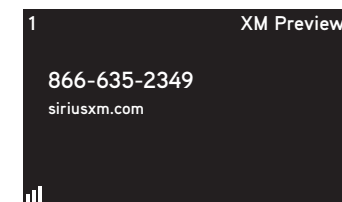
- To subscribe:
 - Online: Go to siriusxm.ca/activate to access or set up an online account, subscribe to the service, and activate your Radio.
 - OR
 - By phone: Call 1-888-539-7474.

Activation usually takes 10 to 15 minutes after you have completed the subscription process, but may take up to an hour. We recommend that your Radio remain on until subscribed. Once subscribed, the Radio will receive and you can tune to the channels in your subscription plan. Press **▲** or **▼** to tune to other channels, and **◀** or **▶** to browse the different categories of channels. Learn what all the buttons do in the panel below.

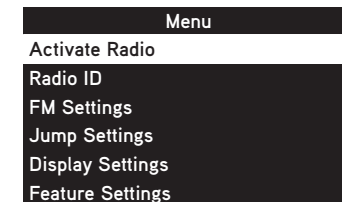
Activation guide:

For your convenience, Onyx EZR has an on-board activation guide. You can activate your radio and subscribe to the XM service by using this guide, where you will be guided step-by-step through the subscription process. To access and use the guide, simply follow these steps:

- Turn Onyx EZR on and press the **menu** button.
- Activate Radio** will be highlighted. Press the **Select** button.
- Follow the directions on each successive screen until you complete the subscription process.



*The phone number shown above may differ from the one shown on your Onyx EZR. All numbers are valid.



8

Onyx EZR Button Functions

FM Button
Press to access and cycle through FM presets; **press and hold** to access FM settings.

Up and Down Buttons
Press to preview and tune to channels through the channel lineup; also **press** to scroll through lists and highlight items in lists.

Power Button
Press to turn Radio on and off.

Menu Button
Press to access advanced features and configuration options; when in configuration options, **press and hold** to return to main display screen.

Left and Right Buttons
Press to search for channels by category.

Select Button
At the main display screen **press** to display and dismiss the favorite channel preview pane; **press** to confirm selection of highlighted item in a menu or list.

Direct Button
Press to enter a channel number using the number buttons and directly tune to the channel.

TuneMix Button
Press to begin TuneMix; **press and hold** to add or remove channels from TuneMix.

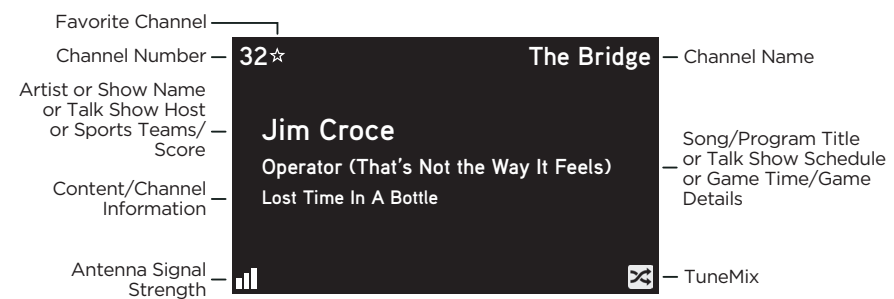
Number Buttons
Press to tune to a stored favorite channel; **press and hold** to store a favorite channel. Also used to enter channel numbers when the Direct button is pressed.

Jump Button
Press to go back to the previous channel to which you were listening; **press and hold** to change display screen mode.

9

Onyx EZR Main Display

When listening to a channel, information about the channel and what is currently playing is displayed.



The Onyx EZR User Guide is available at: siriusxm.ca/userguides

10

Specifications

System	Power Requirements: 9-16 V DC, 500 mA (max) Operating Temperature: -4°F to +140°F (-20°C to +60°C) Audio Output: 1.0 V _{rms} (max)	PowerConnect Power Adapter	Dimensions: 3.7 in (W) x 1.7 in (H) x 1.3 in (D) 94 mm (W) x 43 mm (H) x 34 mm (D) Weight: 2.4 oz (69 g) Input / Output: 9-16 V DC / 5 V DC, 1.5 A Cable Length: Approximately 4.6 ft (1.4 m)
Onyx EZR Radio	Dimensions: 5.0 in (W) x 2.7 in (H) x 0.72 in (D) 128 mm (W) x 68 mm (H) x 18.5 mm (D) Weight: 3.9 oz (111 g)	Vehicle Antenna	Type: SiriusXM Magnetic Mount Connector: SMB female, right angle Cable Length: Approximately 23 ft (7.0 m)
PowerConnect Vehicle Dock	Dimensions: 4.0 in (W) x 2.6 in (H) x 1.2 in (D) 102 mm (W) x 65 mm (H) x 31 mm (D) Weight: 1.6 oz (46 g) Audio Connector: 1/8 in (3.5 mm) female Antenna Connector: SMB male	Aux In Cable	Connectors: 1/8 in (3.5 mm) stereo male to 1/8 in (3.5 mm) stereo male Cable Length: Approximately 4 ft (1.2 m)

11

SiriusXM 12-Month Limited Warranty

What This Warranty Covers
This warranty covers defects in material and workmanship for 12 months from the date of purchase by the original retail purchaser only. SiriusXM Canada Inc., at its sole option, will repair or replace the product with a new or reconditioned product without charge for parts and labour. Products replaced under this warranty become the property of SiriusXM. Replacement products are warranted to be free from defects for 30 days or the remainder of the original warranty, whichever is longer.

What This Warranty Does Not Cover
This warranty does not cover: products sold as used, as is, reconditioned or refurbished; software stored on internal or removable memory; non-rechargeable batteries; surface preparation cleaners, adhesive pads, fasteners, and ear-buds; costs incurred for installation, removal or reinstallation of the product; correction of installation problems, such as elimination of externally generated static or noise and antenna placement and aiming; defects or damage caused by alteration, improper installation or removal, use of third party accessories, mishandling, misuse, neglect, accident, power surges or acts of nature.

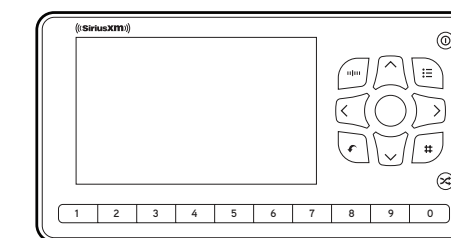
How to Obtain Warranty Service
To obtain warranty service, please call Customer Care at 1-888-539-7474. You will be required to provide proof of purchase and a description of the defect. You must prepay the cost of shipping the product to an approved service center.

LIMITATIONS OF LIABILITY
THE LIABILITY OF SIRIUSXM UNDER THIS WARRANTY IS LIMITED TO REPAIR OR REPLACEMENT AS PROVIDED ABOVE AND IN NO EVENT SHALL THE LIABILITY EXCEED THE PURCHASE PRICE PAID FOR THE PRODUCT. ANY IMPLIED WARRANTIES, INCLUDING ANY IMPLIED WARRANTY OF MERCHANTABILITY OR FITNESS FOR A PARTICULAR PURPOSE, SHALL BE LIMITED TO THE DURATION OF THIS WRITTEN WARRANTY. ANY ACTION FOR BREACH OF WARRANTY, INCLUDING BREACH OF ANY IMPLIED WARRANTY OF MERCHANTABILITY, MUST BE BROUGHT WITHIN 48 MONTHS FROM THE DATE OF ORIGINAL PURCHASE. IN NO CASE SHALL SIRIUSXM BE LIABLE FOR ANY CONSEQUENTIAL OR INCIDENTAL DAMAGES FOR BREACH OF THIS OR ANY OTHER WARRANTY, EXPRESS OR IMPLIED. SOME PROVINCES DO NOT ALLOW LIMITATIONS ON HOW LONG AN IMPLIED WARRANTY LASTS OR THE EXCLUSION OR LIMITATION OF INCIDENTAL OR CONSEQUENTIAL DAMAGES, SO THE ABOVE LIMITATIONS OR EXCLUSIONS MAY NOT APPLY TO YOU. This warranty gives you specific legal rights and you may also have other rights, which vary from province to province.

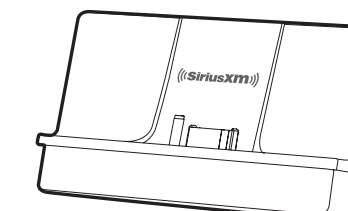
12

What's in the Box?

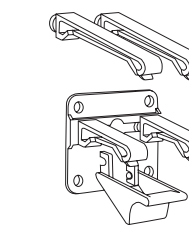
CAUTION: Do not attempt to install, activate, or adjust any of the setting options described in this Quick Start Guide unless your vehicle is parked in a safe location.



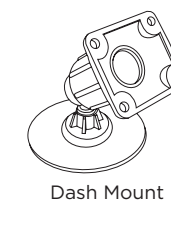
Onyx EZR Radio



PowerConnect™ Vehicle Dock



Vent Mount and Extended Vent Clamps



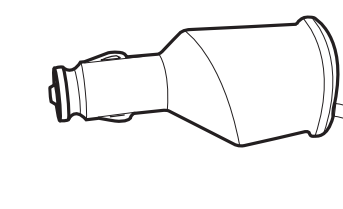
Dash Mount



Antenna & Dash Mount Alcohol Preparation Pads



Screws (4)



PowerConnect Power Adapter



Aux In Cable



Magnetic Mount Antenna