

1 Pick a Spot for Your Radio

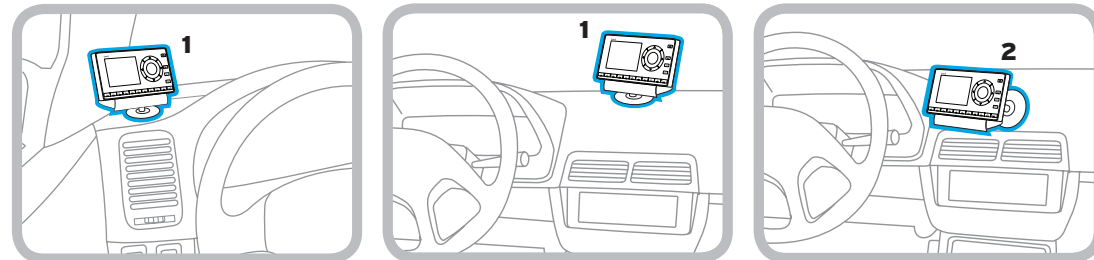
Select either the **Dash Mount** method or the **Vent Mount** method for your Onyx. You will need a phillips-head screwdriver to complete the installation.

IMPORTANT! To make the cable connections easier, wait until after you have connected all the cables to the dock before you attach the dock to the dash or to a vent.

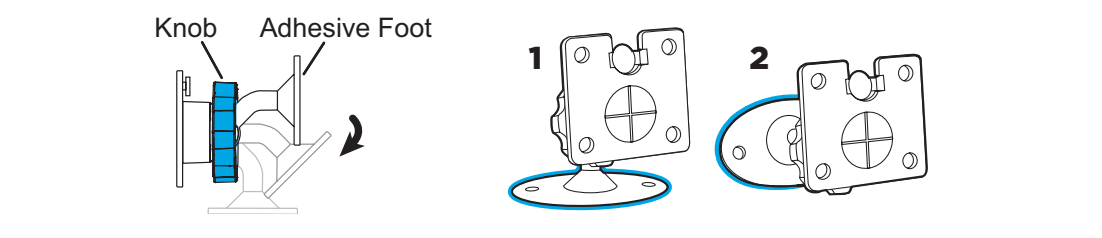
Dash Mount Method:

IMPORTANT: The air temperature needs to be at least 60° F to install the Dash Mount. If needed, turn on the heater in your vehicle.

A. Select a flat surface for the Dash Mount with ample room for Onyx. Avoid mounting on leather surfaces. Choose a location that doesn't interfere with the driver's vision or access to driving controls, one that won't interfere with the deployment of airbags or other safety equipment, and makes your Radio easily accessible for operation. (Airbag locations are typically marked with "SRS" logos.)



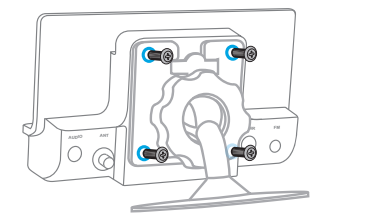
B. Orient the adhesive foot so that Onyx is easily accessible. Loosen the knob and adjust the adhesive foot to position **1** or **2**, and then tighten it.



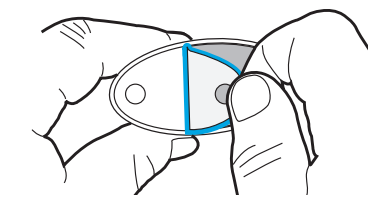
C. Attach the Dash Mount to the PowerConnect Vehicle Dock using the 4 provided screws.

D. Before you attach the Dash Mount to the dash, skip ahead and finish the remainder of the vehicle installation so that the cables are attached to the dock.

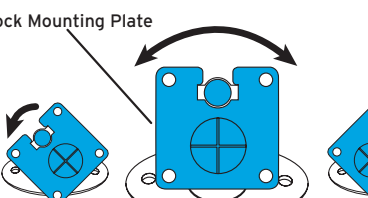
E. Once the cables have been attached to the dock, clean the mounting surface in the vehicle with the alcohol preparation pad and let it dry thoroughly.



F. Peel off the adhesive liner. Position, press, and hold the Dash Mount in place for 30 seconds. Allow the adhesive cure for 2-4 hours.

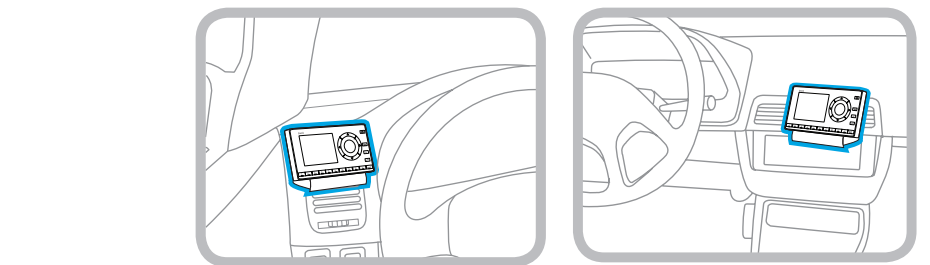


G. You can tilt the dock mounting plate in your preferred direction. (Note that for clarity the illustration does not show the Vehicle Dock attached to the Dash Mount.)

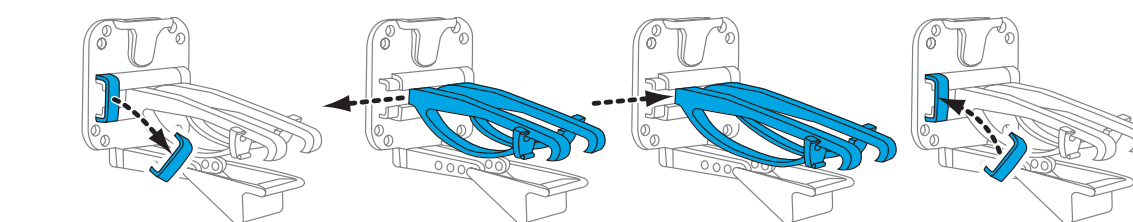


Vent Mount Method:

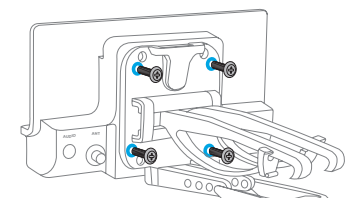
A. Select a vent with ample room for the Onyx, one that won't interfere with the deployment of airbags or other safety equipment, and makes your Onyx Radio easily accessible for operation. (Airbag locations are typically marked with "SRS" logos.)



B. Some vents have recessed louvers. If yours are recessed, remove the regular vent clamps and install the extended vent clamps.



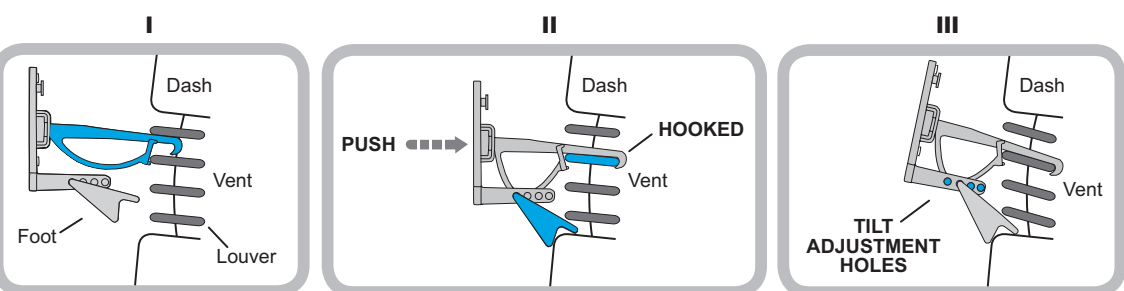
C. Attach the Vent Mount to the PowerConnect Vehicle Dock using the 4 provided screws.



D. Before you attach the Vent Mount to the vent, skip ahead and finish the remainder of the vehicle installation so that the cables are attached to the dock.

E. Once the cables have been attached to the dock, install the Vent Mount onto the vehicle vent. (Note that for clarity the illustrations below do not show the Vehicle Dock attached to the Vent Mount.)

- Insert the vent mount into the vent opening.
- Push until hooked on the rear of the vent louver. Rest the foot against the bottom of the vent.
- If necessary, adjust the tilt of the Vent Mount by repositioning the foot to a different tilt adjustment hole.



2 Mount the Magnetic Mount Antenna

Choose the best location for the antenna considering your vehicle type. Refer to the antenna placement tips and cautions in the User Guide beginning on page 23.

- Sedan or Coupe:** We recommend mounting the antenna just above either the front windshield or the back window.
- Pickup Truck:** We recommend mounting the antenna just above the front windshield.
- Convertible:** We recommend mounting the antenna at the leading edge of the trunk.
- SUV:** We recommend mounting the antenna at the rear of the roof.

CAUTION! STOP and read the more specific instructions in the User Guide for all types of vehicles – or get someone who knows vehicles to help – if you don't understand what to do. You might accidentally do damage to your ride.

Feed the antenna wire under the rubber molding around the front or rear windshield, and into the seal around the trunk or door. For a convertible, the cable can be routed directly into the trunk.

TIP! Use a tool like a blunt plastic putty knife, a credit card, a plastic knife, or a similar blunt tool to help hide wires along the windshield trim.

Hide the Magnetic Mount Antenna Cable Inside the Vehicle

The best place to hide your antenna cable depends on your type of vehicle.

When the antenna is mounted at the rear of the vehicle, it's usually easiest to run the cable from the rear to the front toward the radio by routing the cable along the interior trim where it meets the carpet, gently pushing it behind the edges of the trim. Bring the cable out from the trim and route it under the carpet toward the dashboard.

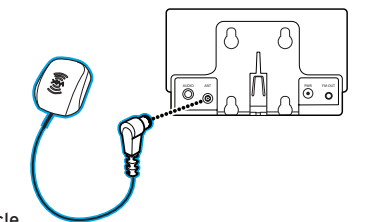
When the antenna is mounted at the front of the vehicle, bring the cable into the rubber weather stripping around the door to the bottom of the door opening. Bring the cable out of the weather stripping and route it under the carpet toward the dashboard.

Coil any excess cable in a hidden location, such as under the carpet, keeping it away from any vehicle pedals or controls. Secure the excess cable with wire ties.

Plug the antenna into the **silver ANT** connection on the rear of the dock.

TIP! A dry vehicle is nice. Avoid damaging or compromising the window, door, and trunk seals.

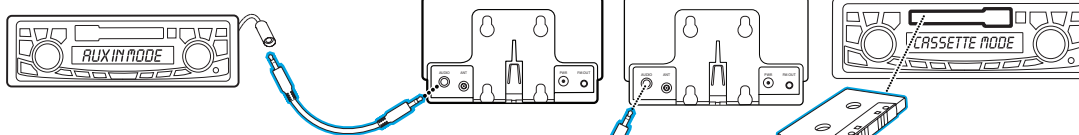
TIP! For more help, refer to the detailed antenna cable routing instructions for your type of vehicle, in the User Guide beginning on page 25.



3 Connect the Audio to Your Vehicle's Stereo

To listen to Onyx through your vehicle's stereo system or FM radio, it must be receiving the XM signal. Be sure your vehicle is outside and the antenna has a clear view of the sky. Connect your Onyx to play it's audio through your vehicle's stereo system or FM radio using one of the following options:

- Best:** Use the **Aux In Cable** if your vehicle's stereo system has an auxiliary input connection. Plug one end of the Aux In Cable into the **green AUDIO** connector on the PowerConnect Vehicle Dock, and the other end into the auxiliary input jack on the vehicle's stereo system. Refer to your vehicle's owners manual to find the location of the auxiliary input jack, or consult the vehicle dealer.
- Better:** Use a **Cassette Adapter** if your vehicle has a built-in cassette player. Cassette Adapters are sold separately and can be purchased from an electronics retailer, or go to xmradio.ca/accessories. Plug the Cassette Adapter into the **green AUDIO** connector on the PowerConnect Vehicle Dock. Insert the Cassette Adapter into the vehicle's cassette deck.
- Good:** Use the **PowerConnect** feature in the Onyx. PowerConnect plays the audio through your vehicle's FM radio. When you have finished step 4 (below), you'll first need to find an available FM channel in your area, and then you need to ensure that the Onyx and your vehicle's FM radio are tuned to the same available FM channel. (Step 5)
- Best:** Use an **FM Direct Adapter**. If none of the above three audio connection options works in your vehicle, you need to use the FM Direct Adapter (FMDA). The FMDA needs to be installed by a professional installer and directly connects the Onyx to your vehicle's FM radio. To learn more, check with the retailer where you bought your radio or go to xmradio.ca/accessories.

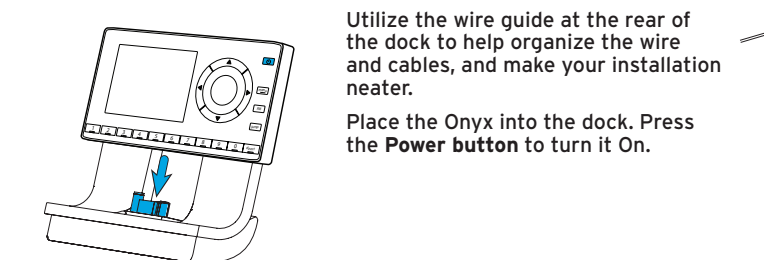


or go to xmradio.ca/accessories. Plug the Cassette Adapter into the **green AUDIO** connector on the PowerConnect Vehicle Dock. Insert the Cassette Adapter into the vehicle's cassette deck.

- Good:** Use the **PowerConnect** feature in the Onyx. PowerConnect plays the audio through your vehicle's FM radio. When you have finished step 4 (below), you'll first need to find an available FM channel in your area, and then you need to ensure that the Onyx and your vehicle's FM radio are tuned to the same available FM channel. (Step 5)
- Best:** Use an **FM Direct Adapter**. If none of the above three audio connection options works in your vehicle, you need to use the FM Direct Adapter (FMDA). The FMDA needs to be installed by a professional installer and directly connects the Onyx to your vehicle's FM radio. To learn more, check with the retailer where you bought your radio or go to xmradio.ca/accessories.

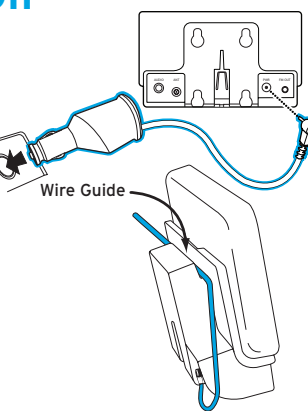
4 Finish the Installation and Power On

Insert the **PowerConnect Power Adapter** into your vehicle's cigarette lighter or power adapter socket. Then plug it into the **red PWR** connector on the rear of the dock.



Utilize the wire guide at the rear of the dock to help organize the wire and cables, and make your installation neater.

Place the Onyx into the dock. Press the **Power** button to turn it On.



5 PowerConnect

If you have connected the audio in step 3 using the **Aux In Cable** or **Cassette Adapter**, continue with step 6.

Tune the Onyx and Vehicle FM Radio to the Same FM Channel:

1. Find an Available FM Channel in Your Area

An available FM channel is one that's not being used by an FM radio station in your area. When you tune your FM radio to an available channel, you should only hear static or silence – not talk or music. To find an available FM channel:

Manually tune through your local FM channels on your vehicle's FM radio. Locate and create a list of channels that aren't being used by any FM radio station. Write down the list. Once you have created your list of available FM channels, you will need to find the one that provides the best match for Onyx.

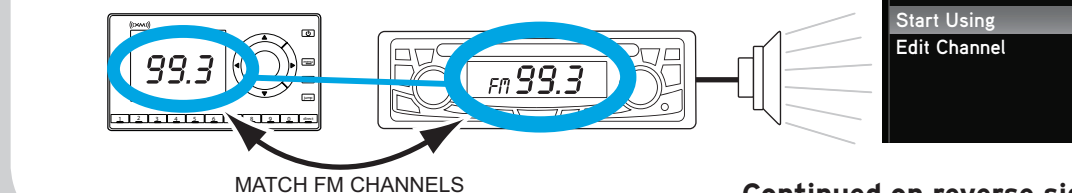
TIP! You'll need to use the "Manual" tune function on your vehicle's FM radio to tune through every FM channel one-by-one. Turn on your vehicle's FM radio. Start at 88.1 and use the "Manual" tune function on your vehicle's FM radio to tune through each FM channel one-by-one (88.1 followed by 88.3 etc.) to locate channels that aren't being used by a local FM radio station. Write down each FM channel that has only static or silence on it, until you reach 107.9.

2. Tune your Vehicle's FM Radio

- Pick the first FM channel on your list.
- Turn on your vehicle's FM radio (if you have not already done so) and tune it to this FM channel.

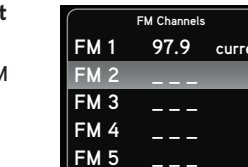
3. Set Your Onyx to Transmit on the Same FM Channel

- Press **menu**.
- Press **▼** to scroll to and highlight **FM Settings** and press the **Select** button.
- FM Channels** will be highlighted. If it is not highlighted, turn on the FM transmitter by highlighting **FM transmitter** and pressing **Select**.
- Once the FM Transmitter is **On**, select **FM Channels** and press **▼** to scroll to and highlight the storage location **FM2** and press the **Select** button.
- Tune to the available FM channel you found in step 7. Press **◀** and **▶** to tune in steps of .2, i.e., 99.3 to 99.5. Press **▼** and **▲** to tune in steps of 1, i.e., 99.3 to 100.3. Press the **Select** button to select the FM channel.
- Start Using** is highlighted. Press the **Select** button.
- The FM channel you selected will be confirmed on the display screen. The Onyx will tune to the FM channel.



MATCH FM CHANNELS

Continued on reverse side



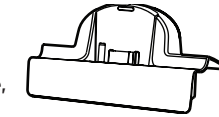
5 PowerConnect (continued)

4. You May Need to Try Other FM Channels on Your List

If the chosen FM channel doesn't work well for you, work down the list of FM channels until you find one that allows you to hear XM clearly. Each time, you will need to tune your vehicle's FM radio and Onyx to the same FM channel.

TIP! You may find an FM channel with static or silence that does not work with Onyx. It is possible that some type of inaudible interference is present that prevents reception of the Onyx broadcast. Your only options are to use another FM channel or a different audio connection method.

NOTE! If you are using the Vehicle Dock from the Universal Xpress Car Kit instead of the PowerConnect Vehicle Dock which came with your Onyx, you will have to complete some additional instructions before you can set Onyx to transmit on an FM channel. Refer to "Using the Vehicle Dock From the Universal Xpress Car Kit" on page 87 of the User Guide, and complete the instructions.



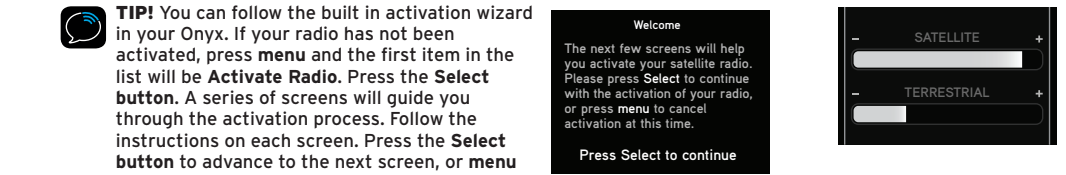
6 Activate

Go back to Step 1 "Pick a Spot for Your Radio" and finish installing the Dash or Vent Mount. Then continue with the activation.

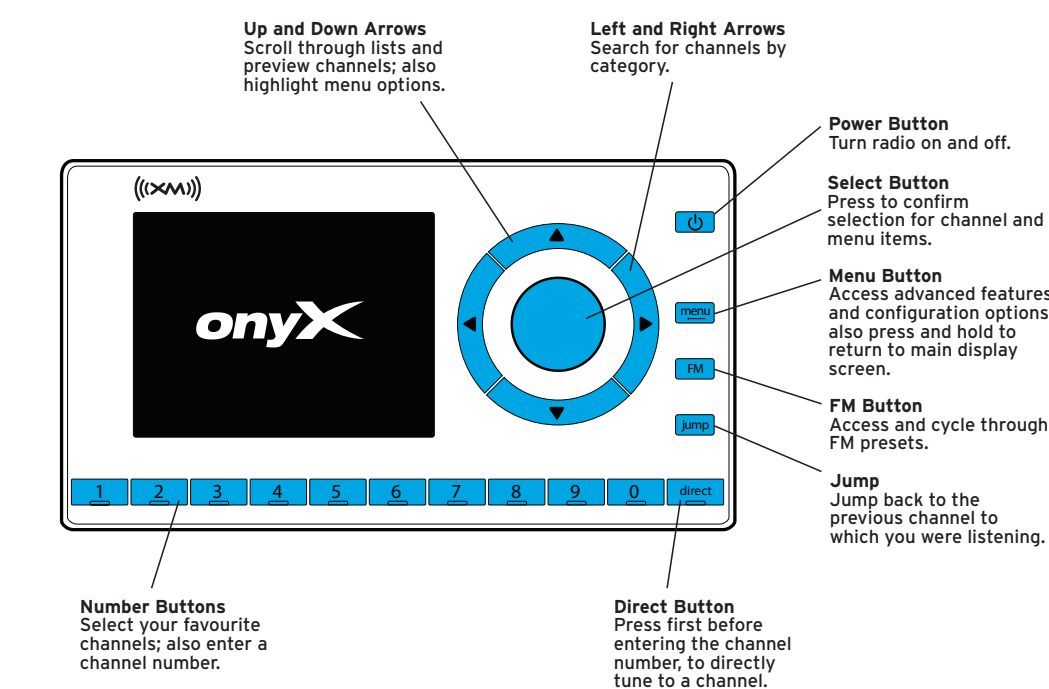
Onyx works on the XM network and requires a XM subscription. Before you can start listening, please do the following:

1. Make sure your Onyx is properly installed and receiving the XM signal so that you can hear the audio on channel 1.
2. Make a note of your XM Radio ID. You can find it on channel 0, on a label on the bottom of the gift box, and on the label on the back of your Onyx.
 - NOTE!** The XM Radio ID does not use the letters I, O, S, or F.
3. Activate your service:
 - Online: Go to www.siriusxm.ca OR
 - By phone: Call 1-877-GET-XMSR (1-877-438-9677)
4. When your service is activated, your Onyx will receive all channels to which you have subscribed. At this time, if you press ▼ or ▲, you can scroll and tune other channels. Activation usually takes 10 to 15 minutes, but may take up to an hour. We recommend that your radio remain on until activated.

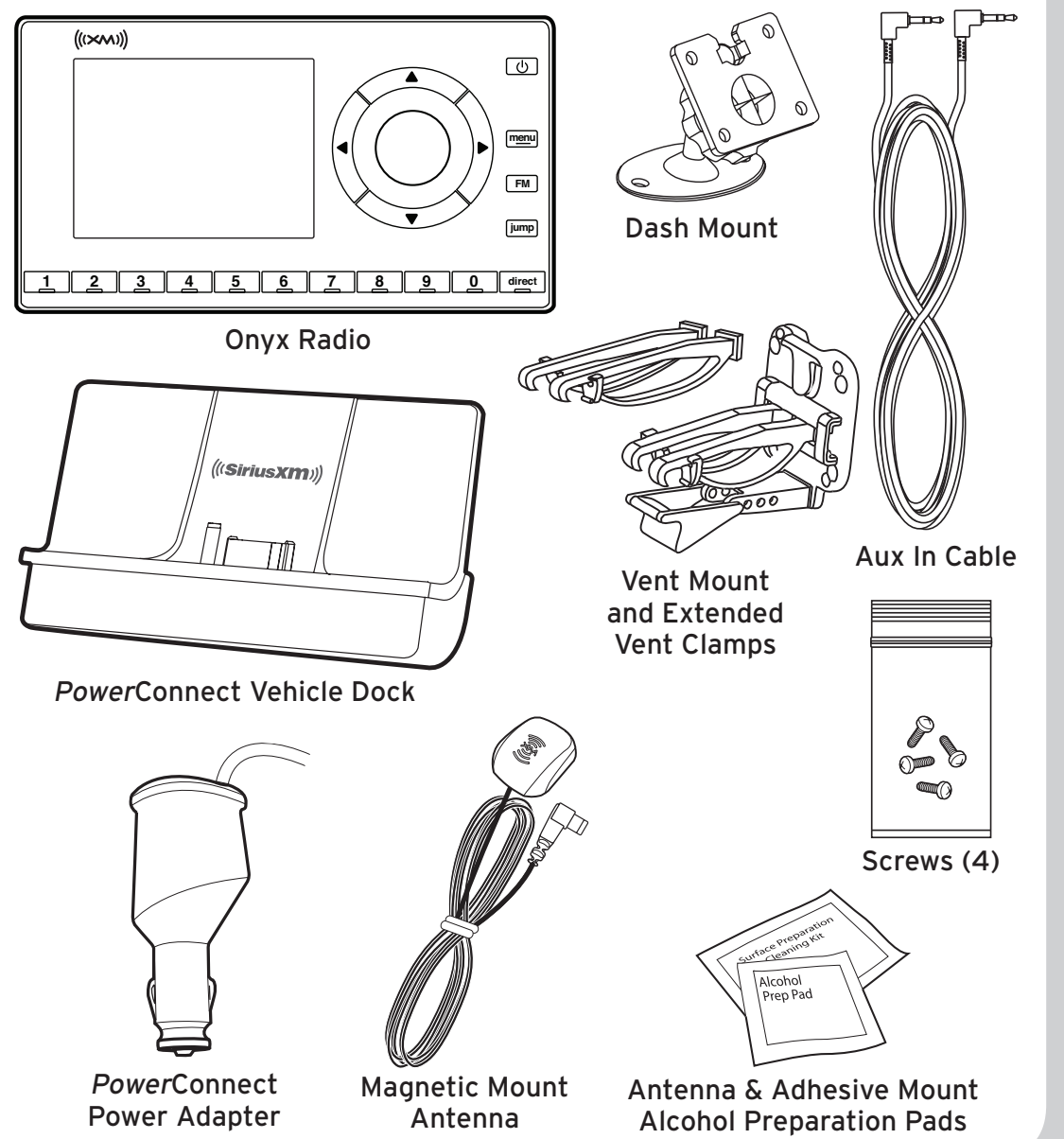
TIP! If the signal reception is low, check to see if the antenna's view of the sky is blocked by a tree, a building, a bridge, or by anything on the vehicle roof such as a roof rack or luggage container, etc. Adjust until you are receiving a good signal. To check the signal, press **menu**. Press ▼ to scroll to and highlight **Signal Indicator** and press the **Select** button.



Navigation Basics



What's in the Box?



Self installation instructions and tips are provided for your convenience. It is your responsibility to determine if you have the knowledge, skills and physical ability required to properly perform an installation. SiriusXM shall have no liability for damage or injury resulting from the installation or use of any SiriusXM or third party products. It is your responsibility to ensure that all products are installed in adherence with local laws and regulations and in such a manner as to allow a vehicle to be operated safely and without distraction. SiriusXM warranties do not cover the installation, removal or reinstallation of any product.



Quick Start Guide

Onyx Radio & Vehicle Kit

www.siriusxm.ca

Sirius XM Canada Inc.
135 Liberty St. - 4th floor
Toronto, Ontario, M6K 1A7
1-877-438-9677

© 2012 SIRIUS XM Radio Inc.
ONYXVKQSG 120831a