

1 Find a Location for Your Radio and Mount It

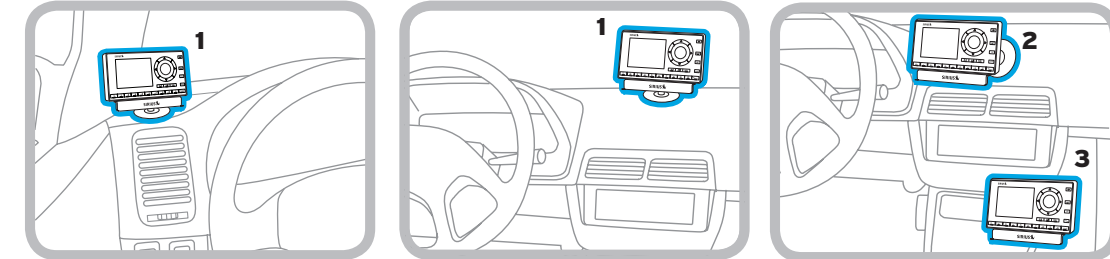
Select either the **Dash Mount** method or the **Vent Mount** method for your Starmate 8. You will need a phillips-head screwdriver to complete the installation.

IMPORTANT! You can take advantage of the wire guide channel across the back of the Vehicle Dock to organize the wires which connect to the dock.

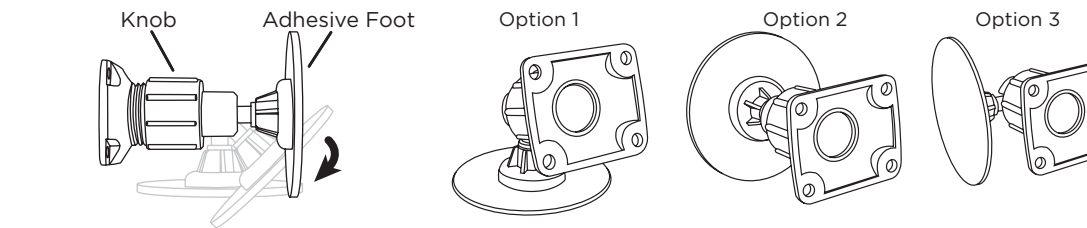
Dash Mount Method:

IMPORTANT: The air temperature needs to be at least 15°C/60°F to install the Dash Mount. If needed, turn on the heater in your vehicle.

A. Select a flat surface for the Dash Mount with ample room for Starmate 8. Avoid mounting on leather surfaces. Choose a location that doesn't interfere with the driver's vision or access to driving controls, one that won't interfere with the deployment of airbags or other safety equipment, and makes Starmate 8 easily accessible for operation. (Airbag locations are typically marked with "SRS" logos.)

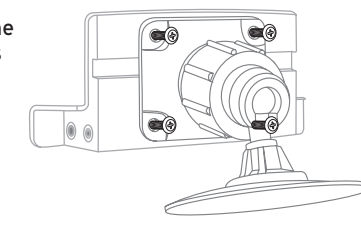


B. Orient the adhesive foot so that Starmate 8 is easily accessible. Loosen the knob and adjust the adhesive foot to position **1**, **2**, or **3**, and then tighten it.



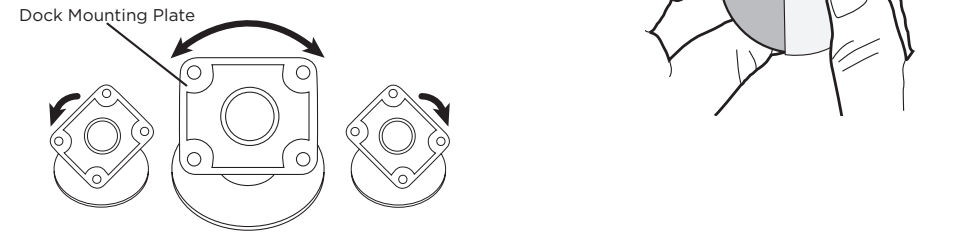
C. Attach the Dash Mount to the *PowerConnect* Vehicle Dock using the 4 provided screws. If you plan to use the wire guide channel across the back of the Vehicle Dock to organize the wires, do not fully tighten the screws. If not, tighten the screws.

D. Clean the mounting surface in the vehicle with the alcohol preparation pad and let it dry thoroughly.



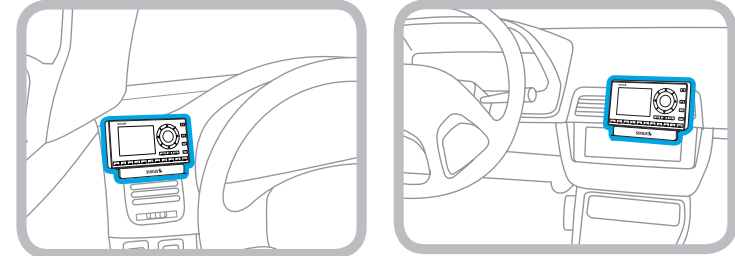
E. Once the surface is dry, remove the adhesive liner. Press and hold the Dash Mount in place for 30 seconds. Allow the adhesive to cure for 2-4 hours.

F. You can tilt the dock mounting plate in your preferred direction.



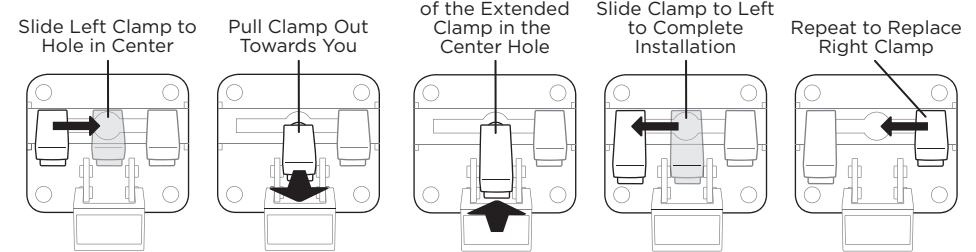
Vent Mount Method:

A. Select a vent with ample room for Starmate 8, one that won't interfere with the deployment of airbags or other safety equipment, and makes Starmate 8 easily accessible for operation. (Airbag locations are typically marked with "SRS" logos.)



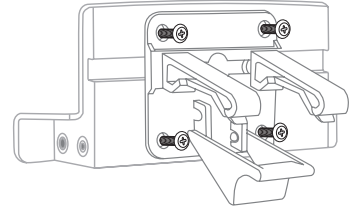
B. Some vents have recessed louvers. If yours are recessed, remove the regular vent clamps and install the extended vent clamps.

Vent Mount Rear View



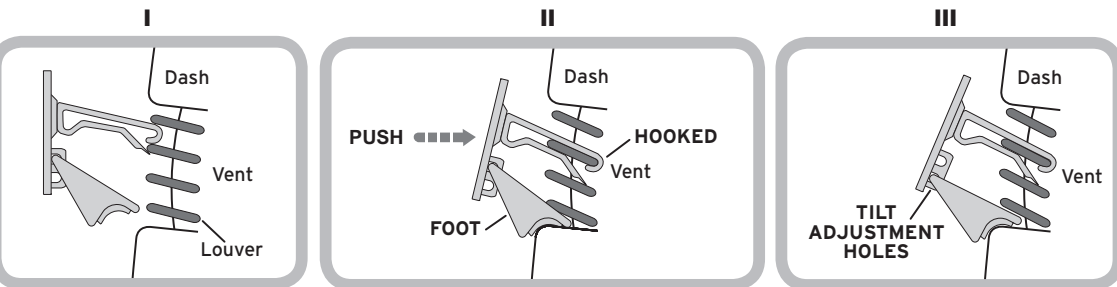
Round End → Orientation ←

C. Attach the Dash Mount to the *PowerConnect* Vehicle Dock using the 4 provided screws. If you plan to use the wire guide channel across the back of the Vehicle Dock to organize the wires, do not fully tighten the screws. If not, tighten the screws.



D. Install the Vent Mount onto the vehicle vent. (Note that for clarity the illustrations below do not show the Vehicle Dock attached to the Vent Mount.)

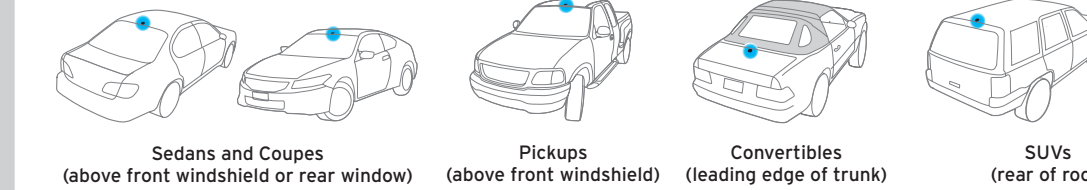
- Insert the vent mount into the vent opening.
- Push until hooked on the rear of the vent louver. Rest the foot against the bottom of the vent.
- If necessary, adjust the tilt of the Vent Mount by repositioning the foot to a different tilt adjustment hole.



2 Mount the Magnetic Mount Antenna

A. Mount the Magnetic Mount Antenna outside your vehicle, on a clean and dry horizontal surface that will always face the sky.

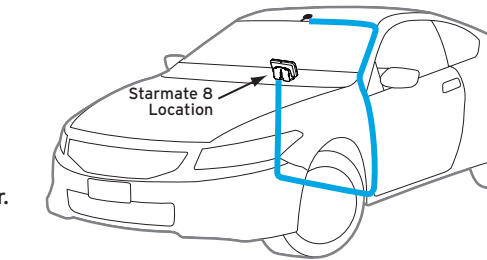
B. Choose the location for the antenna according to your type of vehicle. Center it between the left and right sides, and away from other antennas.



TIP: Use the Alcohol Prep Pad to clean the surface.

3 Route the Antenna Cable

NOTE: These instructions are for a sedan or coupe where the antenna is mounted above the front windshield. The User Guide has detailed antenna cable routing instructions for all types of vehicles. The User Guide is available at siriusxm.ca/userguides.



A. Tuck the antenna cable under the windshield rubber molding and run it to the nearest corner.

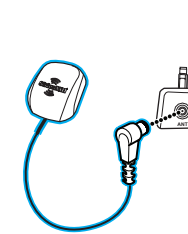
B. Route the cable out of the molding and into the rubber weather stripping around the door opening.

C. Lift the weather stripping. Tuck and run the cable inside it to the bottom of the door opening. Replace the weather stripping.

D. Pull the cable out and route it to Starmate 8.

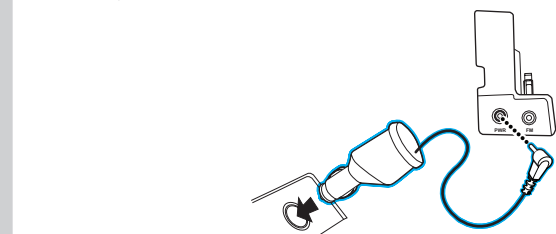
E. Plug the Magnetic Mount Antenna connector into the silver ANT connector on the side of the *PowerConnect* Vehicle Dock.

TIP: Include enough slack in your routing to accommodate open doors or the hood lid. Coll any excess cable in a hidden location and keep it away from any vehicle pedals or controls.

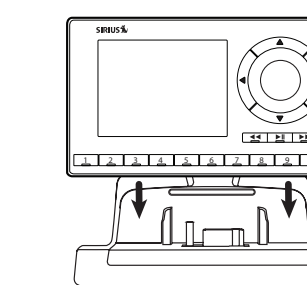


4 Connect the PowerConnect Power Adapter

A. Insert the *PowerConnect* Power Adapter into your vehicle's cigarette lighter or power adapter socket. Plug the other end into the red PWR connector on the side of the *PowerConnect* Vehicle Dock.



B. Place Starmate 8 into the dock and press the **Power** button.

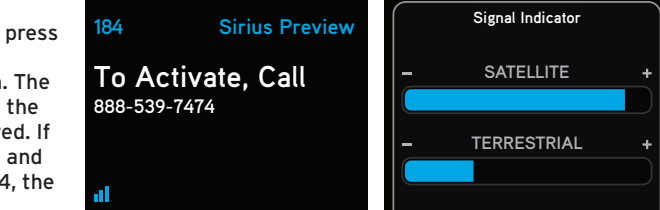


5 Verify Signal Reception

A. Be sure the vehicle is outside and the antenna has a clear view of the sky.

B. Verify that you are receiving the SiriusXM signal. The radio should be tuned to channel 184, the Preview channel. There should at least be one bar on the lower left corner of the screen that denotes antenna signal strength.

C. You can also press **menu** and then press **▼** to scroll to and highlight **Signal Indicator**. Press the **Select** button. The Satellite and Terrestrial bars show the strength of the signal being received. If the signal reception is good, press and hold **menu** to return to channel 184, the Sirius Preview channel.



6 Connect the Audio

Decide on one of the following in-box audio connection options. Refer to "Connect the Audio" in the User Guide for details including other connection options. The User Guide is available at siriusxm.ca/userguides.

Option 1: Best: Use the provided **Aux In Cable**, if your vehicle's stereo system has an auxiliary input jack.

A. Plug one end of the cable into the **green AUDIO** connector on the side of the PowerConnect Vehicle Dock and the other end into the auxiliary input jack on the vehicle's stereo system.

B. Turn on your vehicle's stereo system and set it to play from the auxiliary input source.

C. You should now hear the Sirius Preview channel 184. The installation is complete.

D. If you are using the wire guide channel across the back of the Vehicle Dock to organize the wires, place the wires in the guide and then tighten the 4 screws to securely attach the mount. The installation is complete.

TIP! Refer to your vehicle's owner's manual to find the location of the auxiliary input jack, or consult the vehicle dealer.

Option 2: Good: Use the **PowerConnect™** feature of Starmate 8. PowerConnect plays the Sirius audio through your vehicle's FM radio.

A. Find and make a list of all available FM channels in your area that are not being used by an FM radio station.

B. Pick the first FM channel on your list. Tune your vehicle's FM radio to this FM channel.

C. Set your Starmate 8 to transmit on the same FM channel that you have selected on your vehicle's FM radio:

i. Press **menu** and then press **▼** to scroll to and highlight **FM Settings**. Press the **Select** button.

ii. Press **▼** to scroll to and highlight **FM Channels**. Press the **Select** button.

iii. Press **▼** to scroll to and highlight **FM2**. Press the **Select** button.

iv. Press **◀** and **▶** to tune in steps of .2, or press **▼** and **▲** to tune in steps of 1 to select the available FM channel you have chosen. Press the **Select** button to select the FM channel.

v. **Start Using** will be highlighted. Press the **Select** button.

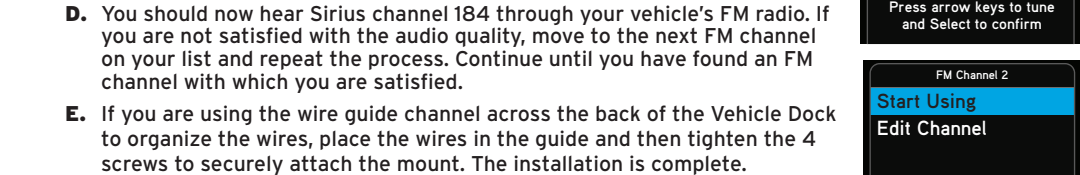
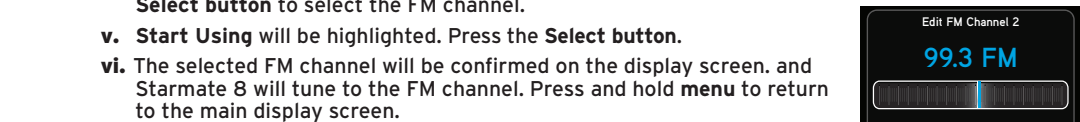
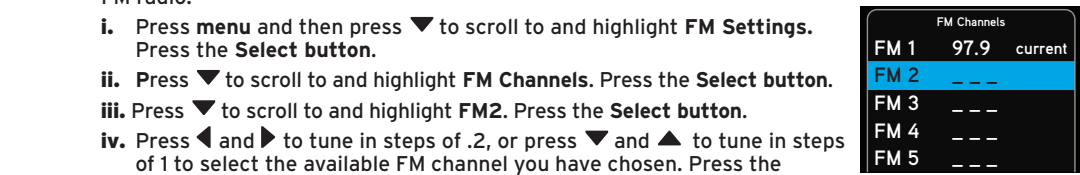
vi. The selected FM channel will be confirmed on the display screen, and Starmate 8 will tune to the FM channel. Press and hold **menu** to return to the main display screen.

D. You should now hear Sirius channel 184 through your vehicle's FM radio. If you are not satisfied with the audio quality, move to the next FM channel on your list and repeat the process. Continue until you have found an FM channel with which you are satisfied.

E. If you are using the wire guide channel across the back of the Vehicle Dock to organize the wires, place the wires in the guide and then tighten the 4 screws to securely attach the mount. The installation is complete.



MATCH FM CHANNELS



7 Subscribe

You can either follow the general activation and subscription process or use the on-board activation guide to activate your Starmate 8 and subscribe to the Sirius service.

General activation and subscription process:

A. Make sure your Starmate 8 is turned on, tuned to Sirius Preview channel 184, and receiving the Sirius signal so that you can hear the Sirius audio.

B. When you first turn on Starmate 8, the Sirius channel lineup may automatically update after the initial startup sequence. Wait until any channel updates have completed before pressing any buttons. Once the channels have been updated, the Radio will automatically tune to channel 184.

C. Make a note of the Sirius ID. You can find it:

- by selecting **Sirius ID** in menu items
- on channel 0 (zero)
- on a label on the bottom of the gift box
- on the label on the back of your Starmate 8

D. To subscribe:

- Online: Go to siriusxm.ca/activate to access or set up an online account, subscribe to the service, and activate your Radio. OR
- By phone: Call 1-888-539-7474

E. Activation usually takes less than 5 minutes after you have completed the subscription process, but sometimes may take longer. We recommend that your Radio remain on until activated. When your service is activated, Starmate 8 will display an alert message. To continue, press any button.

Press **▲** or **▼** to tune to other channels, and **◀** or **▶** to browse the different categories of channels. Learn what all the buttons do in the next box.

Activation guide:

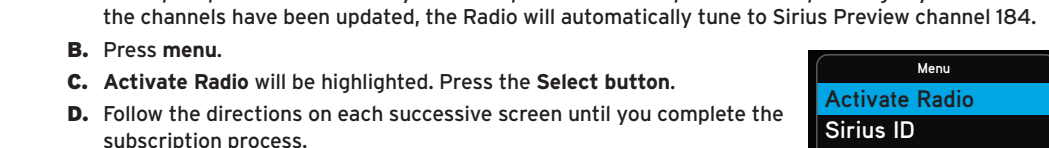
For your convenience, Starmate 8 has an on-board activation guide. You can activate your radio and subscribe to the Sirius service by using this guide, where you will be guided step-by-step through the subscription process. To access and use the guide, simply follow these steps:

A. When you first turn on Starmate 8, the Sirius channel lineup may automatically update after the initial startup sequence. Wait until any channel updates have completed before pressing any buttons. Once the channels have been updated, the Radio will automatically tune to Sirius Preview channel 184.

B. Press **menu**.

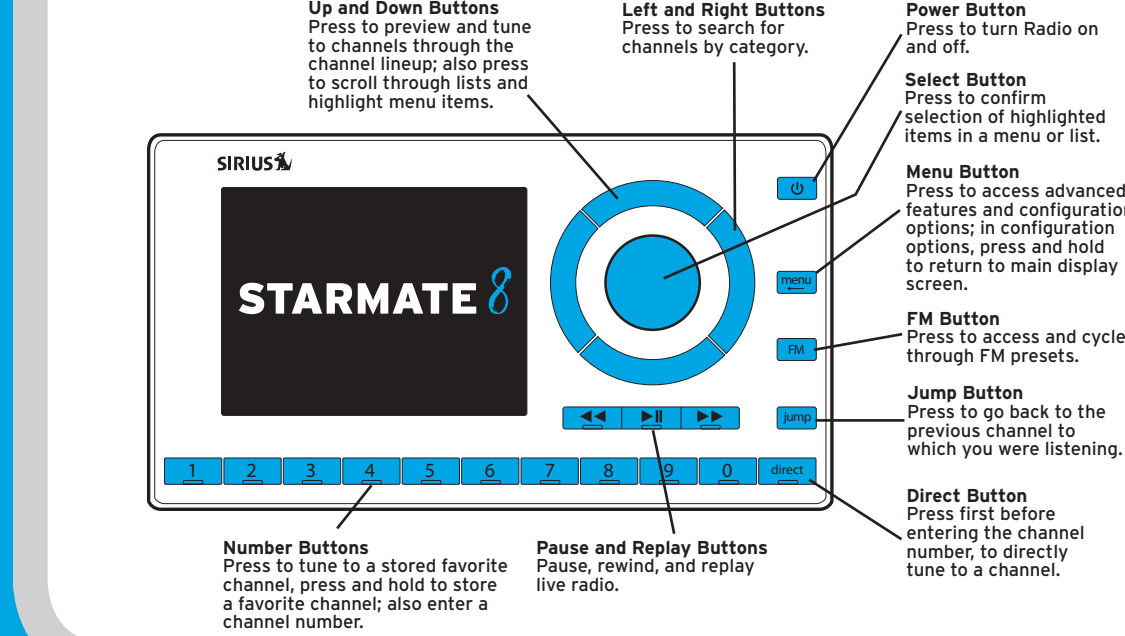
C. **Activate Radio** will be highlighted. Press the **Select** button.

D. Follow the directions on each successive screen until you complete the subscription process.



Subscription Update

Starmate 8 Button Functions



Up and Down Buttons: Press to preview and tune to channels through the channel lineup; also press to scroll through lists and highlight menu items.

Left and Right Buttons: Press to search for channels by category.

Power Button: Press to turn Radio on and off.

Select Button: Press to confirm selection of highlighted items in a menu or list.

Menu Button: Press to access advanced features and configuration options; in configuration options, press and hold to return to main display screen.

FM Button: Press to access and cycle through FM presets.

Jump Button: Press to go back to the previous channel to which you were listening.

Direct Button: Press first before entering the channel number, to directly tune to a channel.

Number Buttons: Press to tune to a stored favorite channel, press and hold to store a favorite channel; also enter a channel number.

Pause and Replay Buttons: Pause, rewind, and replay live radio.

Starmate 8 Main Display

When listening to a channel, information about the channel and what is currently playing is displayed.



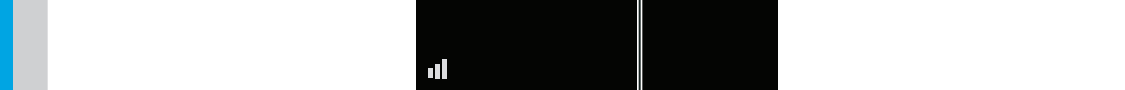
Channel Number — 28 — Channel Name
The Spectrum — Artist Name or Talk Show Host or Sports Teams/Score
Tom Petty — Song/Program Title or Talk Show Schedule or Game Time/Game Details
I Should Have Known It — Antenna Signal Strength

A. When you first turn on Starmate 8, the Sirius channel lineup may automatically update after the initial startup sequence. Wait until any channel updates have completed before pressing any buttons. Once the channels have been updated, the Radio will automatically tune to Sirius Preview channel 184.

B. Press **menu**.

C. **Activate Radio** will be highlighted. Press the **Select** button.

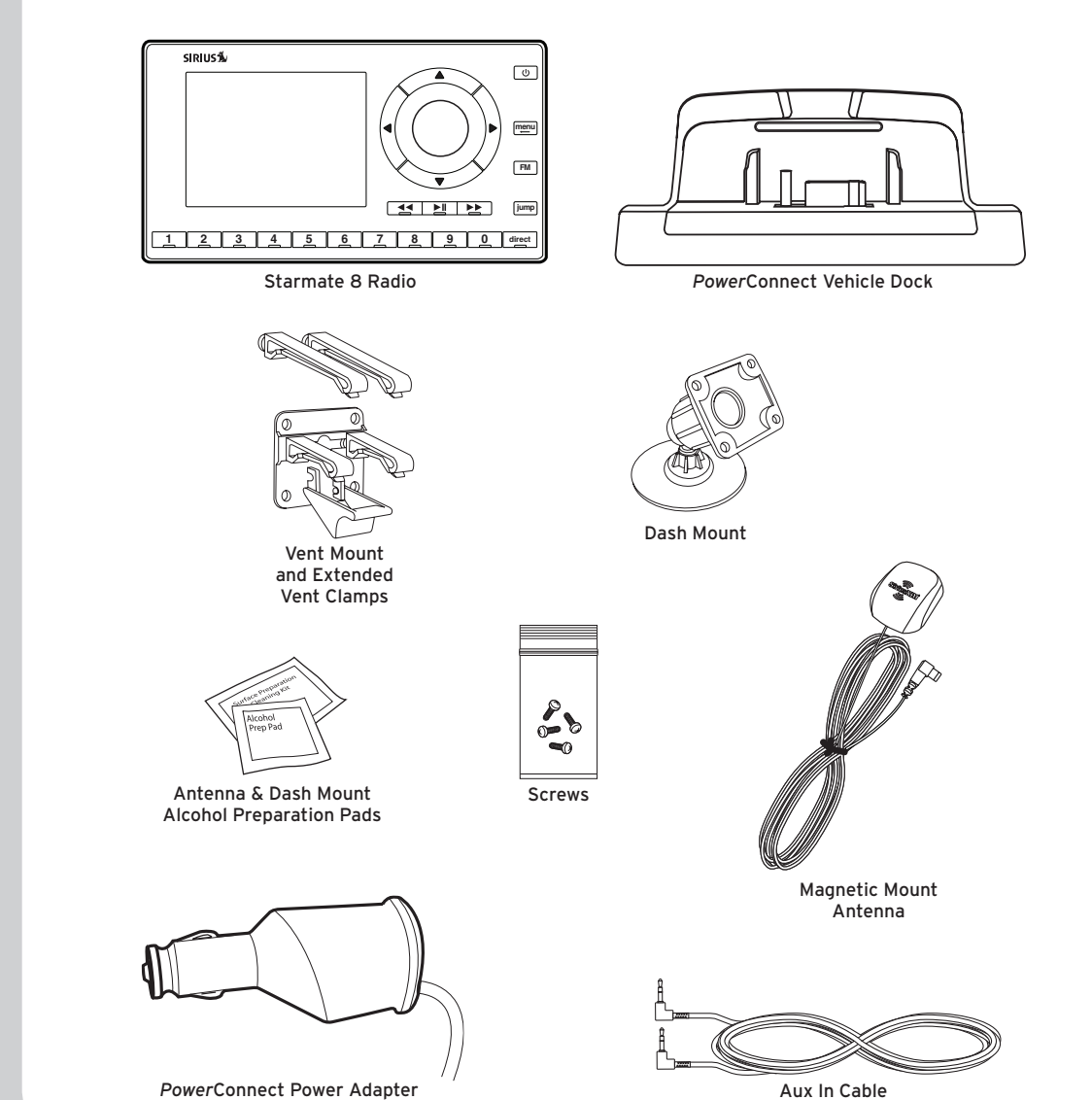
D. Follow the directions on each successive screen until you complete the subscription process.



Activate Radio

What's in the Box?

CAUTION: Do not attempt to install, activate, or adjust any of the setting options described in this Quick Start Guide unless your vehicle is parked in a safe location. The User Guide is available at siriusxm.ca/userguides.



Starmate 8 Radio, PowerConnect Vehicle Dock, Vent Mount and Extended Vent Clamps, Dash Mount, Antenna & Dash Mount Alcohol Preparation Pads, Screws, Magnetic Mount Antenna, PowerConnect Power Adapter, Aux In Cable

SiriusXM 12-Month Limited Warranty

What This Warranty Covers: This warranty covers defects in material and workmanship for 12 months from the date of purchase by the original retail purchaser only. SiriusXM Canada Inc., at its sole option, will repair or replace the product with a new or reconditioned product without charge for parts and labour. Products replaced under this warranty become the property of SiriusXM. Replacement products are warranted to be free from defects for 30 days or the remainder of the original warranty, whichever is longer.

What This Warranty Does Not Cover: This warranty does not cover: products sold as used, as is, reconditioned or refurbished; software stored on internal or removable memory; non-rechargeable batteries, surface preparation cleaners, adhesive pads, fasteners, and ear-buds; costs incurred for installation, removal or reinstallation of the product; correction of installation problems, such as elimination of externally generated static or noise and antenna placement and aiming; defects or damage caused by alteration, improper installation or removal, use of third party accessories, mishandling, misuse, neglect, accident, power surges or acts of nature.

How to Obtain Warranty Service: To obtain warranty service, please call Customer Care at 1-888-539-7474. You will be required to provide proof of purchase and a description of the defect. You must prepay the cost of shipping the product to an approved service center.

LIMITATIONS OF LIABILITY: THE LIABILITY OF SIRIUSXM UNDER THIS WARRANTY IS LIMITED TO REPAIR OR REPLACEMENT AS PROVIDED ABOVE AND IN NO EVENT SHALL THE LIABILITY EXCEED THE PURCHASE PRICE PAID FOR THE PRODUCT. ANY IMPLIED WARRANTIES, INCLUDING ANY IMPLIED WARRANTY OF MERCHANTABILITY OR FITNESS FOR A PARTICULAR PURPOSE, SHALL BE LIMITED TO THE DURATION OF THIS WRITTEN WARRANTY. ANY ACTION FOR BREACH OF WARRANTY, INCLUDING BREACH OF ANY IMPLIED WARRANTY OF MERCHANTABILITY, MUST BE BROUGHT WITHIN 48 MONTHS FROM THE DATE OF ORIGINAL PURCHASE. IN NO CASE SHALL SIRIUSXM BE LIABLE FOR ANY CONSEQUENTIAL OR INCIDENTAL DAMAGES FOR BREACH OF THIS OR ANY OTHER WARRANTY, EXPRESS OR IMPLIED. SOME PROVINCES DO NOT ALLOW LIMITATIONS ON HOW LONG AN IMPLIED WARRANTY LASTS OR THE EXCLUSION OR LIMITATION OF INCIDENTAL OR CONSEQUENTIAL DAMAGES, SO THE ABOVE LIMITATIONS OR EXCLUSIONS MAY NOT APPLY TO YOU. This warranty gives you specific legal rights and you may also have other rights, which vary from province to province.

If you experience problems with the operation or performance of your product **DO NOT RETURN THIS PRODUCT TO YOUR RETAILER**. Call Customer Care at 1-888-539-7474.

Self installation instructions and tips are provided for your convenience. It is your responsibility to determine if you have the knowledge, skills and physical ability required to properly perform an installation. SiriusXM shall have no liability for damage or injury resulting from the installation or use of any SiriusXM or third party products. It is your responsibility to ensure that all products are installed in adherence with local laws and regulations and in such a manner as to allow a vehicle to be operated safely and without distraction. SiriusXM warranties do not cover the installation, removal or reinstallation of any product.

This Class B digital apparatus complies with Canadian ICES-003. This device complies with Industry Canada license-exempt RSS standard(s). Operation is subject to the following two conditions: (1) this device may not cause interference, and (2) this device must accept any interference, including interference that may cause undesired operation of the device.

© 2016 Sirius XM Radio Inc. ST8VK05G 151110a



Quick Start Guide

Starmate 8 Radio & Vehicle Kit

© 2016 Sirius XM Radio Inc. ST8VK05G 151110a