

1 Find a Location for Your Radio and Mount It

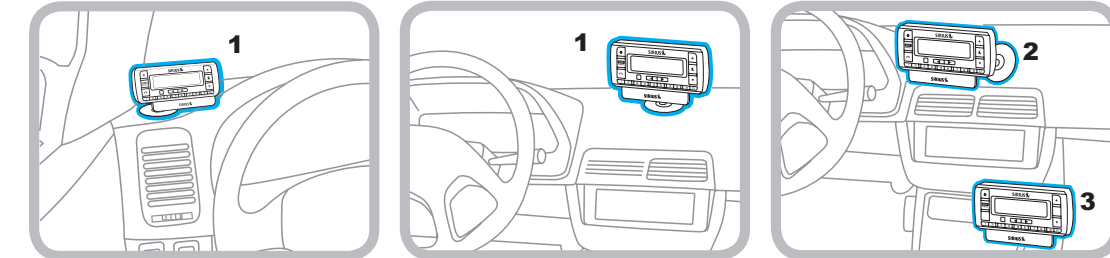
Select either the **Dash Mount** method or the **Vent Mount** method for your Stratus 6. You will need a phillips-head screwdriver to complete the installation.

IMPORTANT! You can take advantage of the wire guide channel across the back of the Vehicle Dock to organize the wires which connect to the dock.

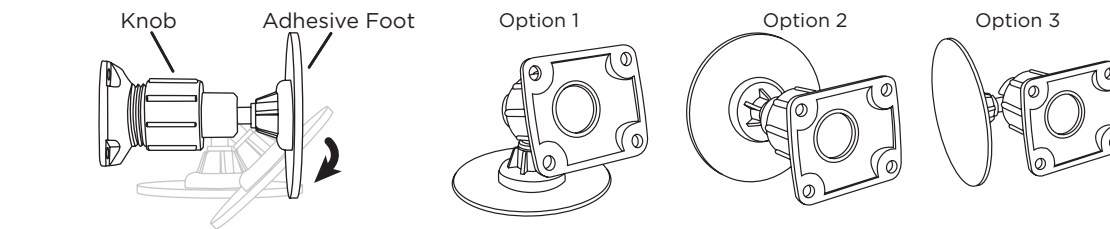
Dash Mount Method:

IMPORTANT: The air temperature needs to be at least 15°C/60°F to install the Dash Mount. If needed, turn on the heater in your vehicle.

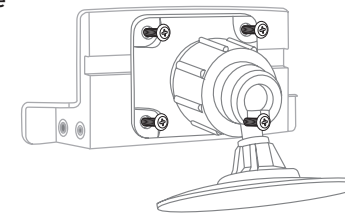
A. Select a flat surface for the Dash Mount with ample room for Stratus 6. Avoid mounting on leather surfaces. Choose a location that doesn't interfere with the driver's vision or access to driving controls, one that won't interfere with the deployment of airbags or other safety equipment, and makes Stratus 6 easily accessible for operation. (Airbag locations are typically marked with "SRS" logos.)



B. Orient the adhesive foot so that Stratus 6 is easily accessible. Loosen the knob and adjust the adhesive foot to position **1**, **2**, or **3**, and then tighten it.



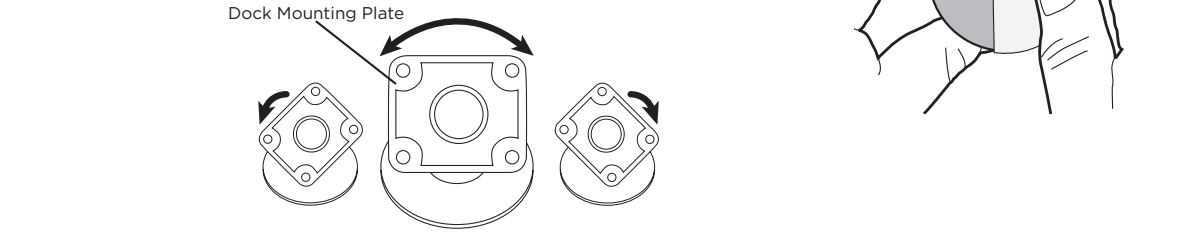
C. Attach the Dash Mount to the *PowerConnect* Vehicle Dock using the 4 provided screws. If you plan to use the wire guide channel across the back of the Vehicle Dock to organize the wires, do not fully tighten the screws. If not, tighten the screws.



D. Clean the mounting surface in the vehicle with the alcohol preparation pad and let it dry thoroughly.

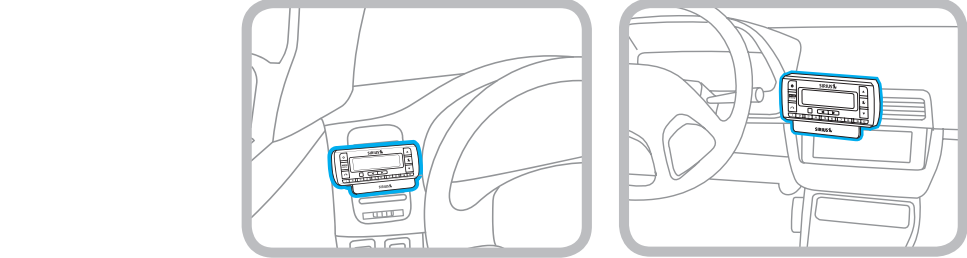
E. Once the surface is dry, remove the adhesive liner. Press and hold the Dash Mount in place for 30 seconds. Allow the adhesive to cure for 2-4 hours.

F. You can tilt the dock mounting plate in your preferred direction.

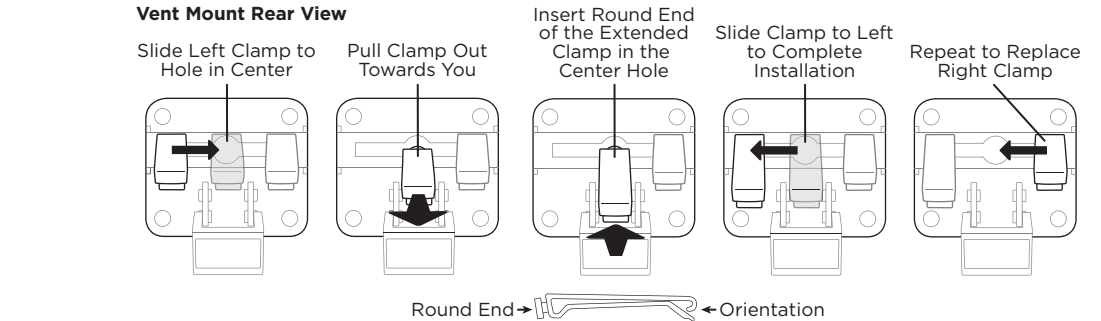


Vent Mount Method:

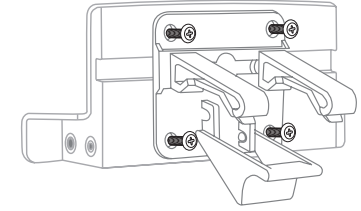
A. Select a vent with ample room for Stratus 6, one that won't interfere with the deployment of airbags or other safety equipment, and makes Stratus 6 easily accessible for operation. (Airbag locations are typically marked with "SRS" logos.)



B. Some vents have recessed louvers. If yours are recessed, remove the regular vent clamps and install the extended vent clamps.

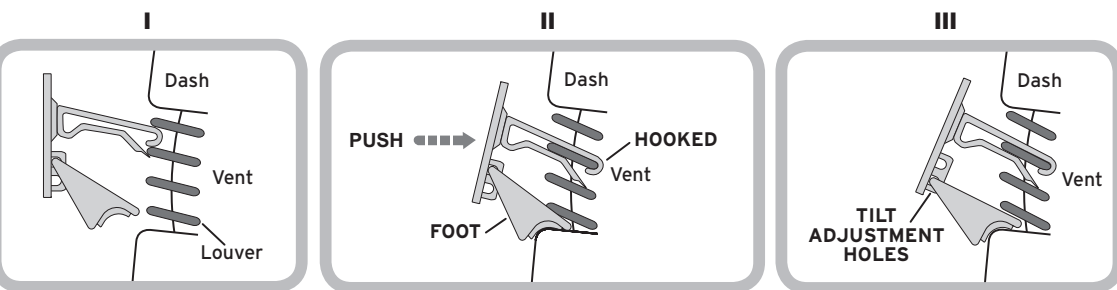


C. Attach the Dash Mount to the *PowerConnect* Vehicle Dock using the 4 provided screws. If you plan to use the wire guide channel across the back of the Vehicle Dock to organize the wires, do not fully tighten the screws. If not, tighten the screws.



D. Install the Vent Mount onto the vehicle vent. (Note that for clarity the illustrations below do not show the Vehicle Dock attached to the Vent Mount.)

- Insert the vent mount into the vent opening.
- Push until hooked on the rear of the vent louver. Rest the foot against the bottom of the vent.
- If necessary, adjust the tilt of the Vent Mount by repositioning the foot to a different tilt adjustment hole.

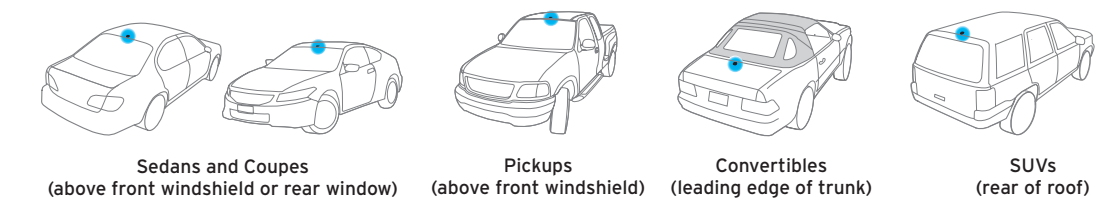


2 Mount the Magnetic Mount Antenna

A. Mount the Magnetic Mount Antenna outside your vehicle, on a clean and dry horizontal surface that will always face the sky.



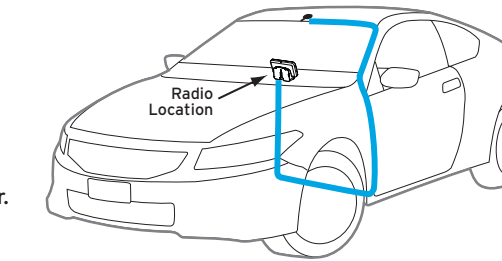
B. Choose the location for the antenna according to your type of vehicle. Center it between the left and right sides, and away from other antennas.



TIP: Use the Alcohol Prep Pad to clean the surface.

3 Route the Antenna Cable

NOTE: These instructions are for a sedan or coupe where the antenna is mounted above the front windshield. The User Guide has detailed antenna cable routing instructions for all types of vehicles. The User Guide is available at siriusxm.ca/userguides.



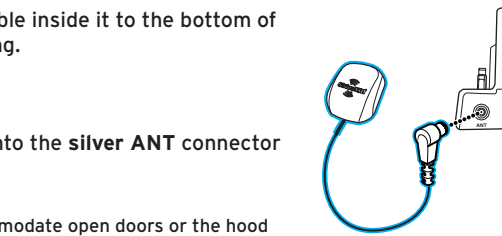
A. Tuck the antenna cable under the windshield rubber molding and run it to the nearest corner.

B. Route the cable out of the molding and into the rubber weather stripping around the door opening.

C. Lift the weather stripping. Tuck and run the cable inside it to the bottom of the door opening. Replace the weather stripping.

D. Pull the cable out and route it to Stratus 6.

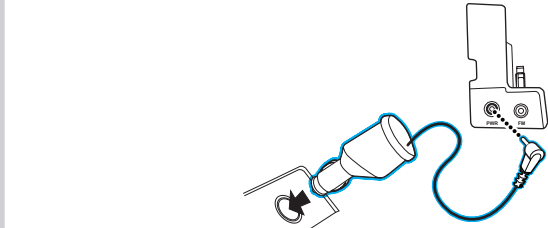
E. Plug the Magnetic Mount Antenna connector into the silver ANT connector on the side of the *PowerConnect* Vehicle Dock.



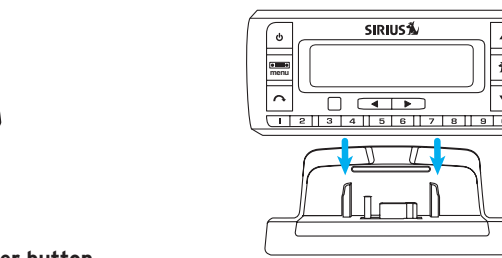
TIP: Include enough slack in your routing to accommodate open doors or the hood lid. Coll any excess cable in a hidden location and keep it away from any vehicle pedals or controls.

4 Connect the PowerConnect Power Adapter

A. Insert the *PowerConnect* Power Adapter into your vehicle's cigarette lighter or power adapter socket. Plug the other end into the red PWR connector on the side of the *PowerConnect* Vehicle Dock.



B. Place Stratus 6 into the dock and press the **Power** button.



5 Verify Signal Reception

A. Be sure the vehicle is outside and the antenna has a clear view of the sky.

B. Verify that you are receiving the SiriusXM signal. The radio should be tuned to channel 184, the Preview channel. There should be at least one bar on the lower left corner of the screen that denotes antenna signal strength.



C. You can also press **menu** and then press **▼** to scroll to and highlight **Signal Indicator**. Press the **Select** button. The Satellite and Terrestrial bars show the strength of the signal being received. If the signal reception is good, press and hold **menu** to return to channel 184, the Preview channel.

6 Connect the Audio

Decide on one of the following in-box audio connection options. Refer to "Connect the Audio in the User Guide for details including other connection options. The User Guide is available at siriusxm.ca/userguides.

Option 1: Best: Use the provided **Aux In Cable**, if your vehicle's stereo system has an auxiliary input jack.

A. Plug one end of the cable into the **green AUDIO** connector on the side of the PowerConnect Vehicle Dock and the other end into the auxiliary input jack on the vehicle's stereo system.

B. Turn on your vehicle's stereo system and set it to play from the auxiliary input source.

C. You should now hear the Sirius Preview channel 184. The installation is complete.

D. If you are using the wire guide channel across the back of the Vehicle Dock to organize the wires, place the wires in the guide and then tighten the 4 screws to securely attach the mount. The installation is complete.

TIP! Refer to your vehicle's owner's manual to find the location of the auxiliary input jack, or consult the vehicle dealer.

Option 2: Good: Use the **PowerConnect™** feature of Stratus 6. PowerConnect plays the Sirius audio through your vehicle's FM radio.

A. Find and make a list of all available FM channels in your area that are not being used by an FM radio station.

B. Pick the first FM channel on your list. Tune your vehicle's FM radio to this FM channel.

C. Set your Stratus 6 to transmit on the same FM channel that you have selected on your vehicle's FM radio:

i. Press **menu** and then press **▼** to scroll to and highlight **FM Settings**. Press the **Select** button.

ii. Press **▼** to scroll to and highlight **FM Channels**. Press the **Select** button.

iii. Press **▼** to scroll to and highlight **FM2**. Press the **Select** button.

iv. Press **◀** and **▶** to tune in steps of .2, or press **▼** and **▲** to tune in steps of 1 to select the available FM channel you have chosen. Press the **Select** button to select the FM channel.

v. **Start Using** will be highlighted. Press the **Select** button.

vi. The selected FM channel will be confirmed on the display screen, and Starmate 8 will tune to the FM channel. Press and hold **menu** to return to the main display screen.

D. You should now hear Sirius channel 184 through your vehicle's FM radio. If you are not satisfied with the audio quality, move to the next FM channel on your list and repeat the process. Continue until you have found an FM channel with which you are satisfied.

E. If you are using the wire guide channel across the back of the Vehicle Dock to organize the wires, place the wires in the guide and then tighten the 4 screws to securely attach the mount. The installation is complete.



MATCH FM CHANNELS

7 Subscribe

The Stratus 6 works on the Sirius network and requires a Sirius subscription. Before you can start listening, please do the following:

A. Be sure that your Stratus 6 is correctly installed, is properly docked in the Vehicle Dock, and that the antenna is oriented to receive the SiriusXM signal.

B. Turn on the Stratus 6. After the startup sequence, it will update the channel line-up. Wait until the channel updates have completed before pressing any buttons.

C. Once the channels have been updated, the radio will automatically tune to channel 184 and the display will change to Call 1-888-539-7474 to Subscribe. You will not be able to listen to any other channels until you activate your SiriusXM subscription.

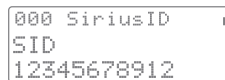
D. Use the Channel UP/DOWN buttons to tune to channel 0 to display your Stratus 6's unique 12-digit Sirius ID number (SID). Write the SID number down.

The SID number is also available on your Stratus 6's packaging, and may also be accessed by pressing the FM Presets/Menu button and selecting Sirius ID.

E. Have your credit card handy and visit siriusxm.ca/activate and follow the prompts to activate your subscription. You can also call SiriusXM toll-free at: **1-888-539-7474**.

F. When you have successfully subscribed to the SiriusXM service your Stratus 6 will display an alert message. To continue, press any button.

You are now ready to begin enjoying SiriusXM!



Stratus 6 Button Functions

Power Button
Press to turn Stratus 6 on and off.

FM / Menu Button
FM: Press to access and cycle through FM presets.
Menu: Press and hold to access advanced features and configuration options; in configuration options, press and hold to return to main display screen.

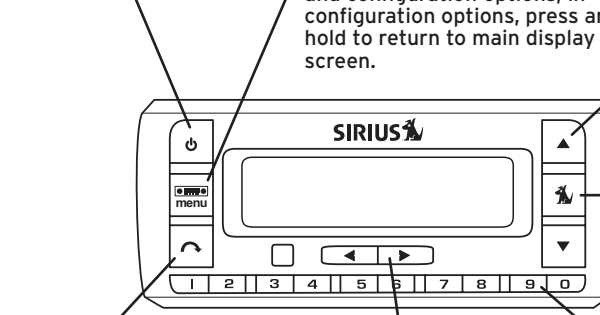
Up and Down Buttons
Press to preview and tune channels through the channel lineup; also press to scroll through lists and highlight menu items.

Select Button
Press to confirm selection of highlighted items in a menu or list; when not in a menu or list, press first before entering the channel number, to directly tune to a channel. Press and hold to go back to the previous channel.

Jump Button
Press to go back to the previous channel to which you were listening.

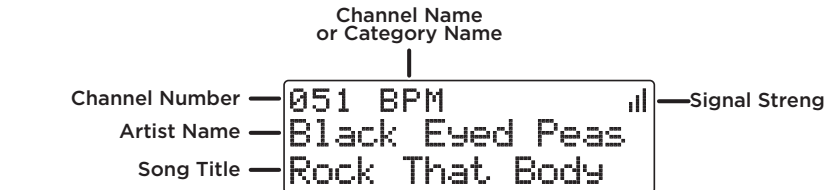
Left and Right Arrows
Press to search for channels by category.

Number Buttons
Press to tune to a stored favorite channel, press and hold to store a favorite channel; also enter a channel number.



Stratus 6 Main Display

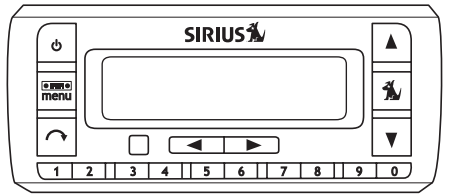
When listening to a channel, information about the channel and what is currently playing is displayed.



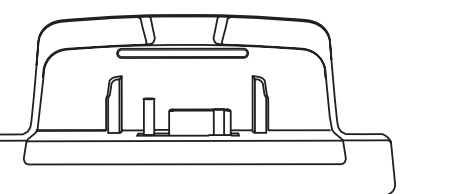
The Stratus 6 User Guide is available at siriusxm.ca/userguides.

What's in the Box?

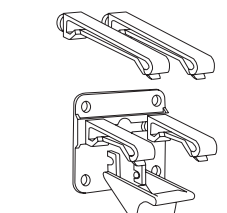
CAUTION: Do not attempt to install, activate, or adjust any of the setting options described in this Quick Start Guide unless your vehicle is parked in a safe location. The User Guide is available at siriusxm.ca/userguides.



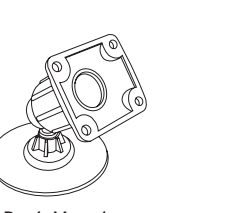
Stratus 6 Radio



PowerConnect Vehicle Dock



Vent Mount and Extended Vent Clamps



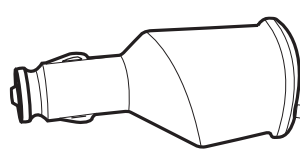
Dash Mount



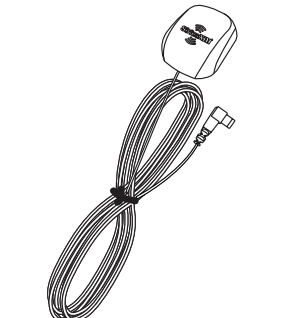
Antenna & Dash Mount Alcohol Preparation Pads



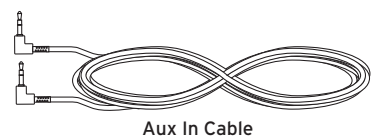
Screws



PowerConnect Power Adapter



Magnetic Mount Antenna



Aux In Cable

SiriusXM 12-Month Limited Warranty

What This Warranty Covers
This warranty covers defects in material and workmanship for 12 months from the date of purchase by the original retail purchaser only. SiriusXM Canada Inc., at its sole option, will repair or replace the product with a new or reconditioned product without charge for parts and labour. Products replaced under this warranty become the property of SiriusXM. Replacement products are warranted to be free from defects for 30 days or the remainder of the original warranty, whichever is longer.

What This Warranty Does Not Cover
This warranty does not cover: products sold as used, as is, reconditioned or refurbished; software stored on internal or removable memory; non-rechargeable batteries, surface preparation cleaners, adhesive pads, fasteners, and ear-buds; costs incurred for installation, removal or reinstallation of the product; correction of installation problems, such as elimination of externally generated static or noise and antenna placement and aiming; defects or damage caused by alteration, improper installation or removal, use of third party accessories, mishandling, misuse, neglect, accident, power surges or acts of nature.

How to Obtain Warranty Service
To obtain warranty service, please call Customer Care at 1-888-539-7474. You will be required to provide proof of purchase and a description of the defect. You must prepay the cost of shipping the product to an approved service center.

LIMITATIONS OF LIABILITY
THE LIABILITY OF SIRIUSXM UNDER THIS WARRANTY IS LIMITED TO REPAIR OR REPLACEMENT AS PROVIDED ABOVE AND IN NO EVENT SHALL THE LIABILITY EXCEED THE PURCHASE PRICE PAID FOR THE PRODUCT. ANY IMPLIED WARRANTIES, INCLUDING ANY IMPLIED WARRANTY OF MERCHANTABILITY OR FITNESS FOR A PARTICULAR PURPOSE, SHALL BE LIMITED TO THE DURATION OF THIS WRITTEN WARRANTY. ANY ACTION FOR BREACH OF WARRANTY, INCLUDING BREACH OF ANY IMPLIED WARRANTY OF MERCHANTABILITY, MUST BE BROUGHT WITHIN 48 MONTHS FROM THE DATE OF ORIGINAL PURCHASE. IN NO CASE SHALL SIRIUSXM BE LIABLE FOR ANY CONSEQUENTIAL OR INCIDENTAL DAMAGES FOR BREACH OF THIS OR ANY OTHER WARRANTY, EXPRESS OR IMPLIED, SOME PROVINCES DO NOT ALLOW LIMITATIONS ON HOW LONG AN IMPLIED WARRANTY LASTS OR THE EXCLUSION OR LIMITATION OF INCIDENTAL OR CONSEQUENTIAL DAMAGES, SO THE ABOVE LIMITATIONS OR EXCLUSIONS MAY NOT APPLY TO YOU. This warranty gives you specific legal rights and you may also have other rights, which vary from province to province.

If you experience problems with the operation or performance of your product
DO NOT RETURN THIS PRODUCT TO YOUR RETAILER
Call Customer Care at 1-888-539-7474

siriusxm.ca

Sirius XM Canada Inc.
135 Liberty St. - 4th floor
Toronto, Ontario, M6K 1A7
1-888-539-7474

© 2016 Sirius XM Radio Inc.
SV6VKQSC 151116a



Quick Start Guide

Stratus 6 Radio & Vehicle Kit

Self installation instructions and tips are provided for your convenience. It is your responsibility to determine if you have the knowledge, skills and physical ability required to properly perform an installation. SiriusXM shall have no liability for damage or injury resulting from the installation or use of any SiriusXM or third party products. It is your responsibility to ensure that all products are installed in adherence with local laws and regulations and in such a manner as to allow a vehicle to be operated safely and without distraction. SiriusXM warranties do not cover the installation, removal or reinstallation of any product.

This Class B digital apparatus complies with Canadian ICES-003.

This device complies with Industry Canada license-exempt RSS standard(s). Operation is subject to the following two conditions: (1) this device may not cause interference, and (2) this device must accept any interference, including interference that may cause undesired operation of the device.