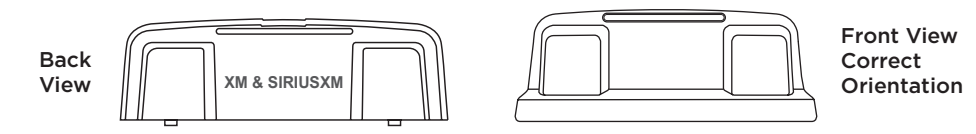


# 1 Insert the Radio Dock Adapter Into the Dock

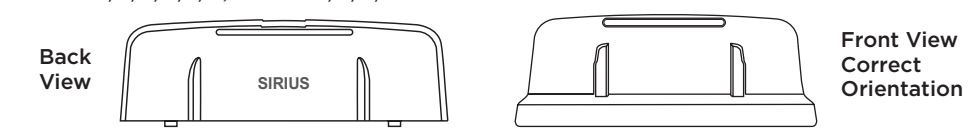
You'll need to insert the Radio Dock Adapter that is compatible with your Radio into the Vehicle Dock.

**A.** Locate the Radio Dock Adapter that is compatible with your Radio.

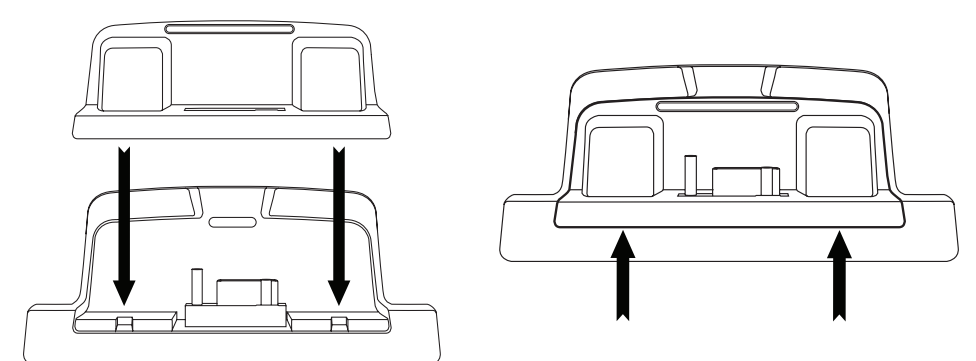
**If you have an XM Radio:** If your Radio is branded as **XM\***, select the Radio Dock Adapter marked **XM & SIRIUSXM** on the back of the adapter. Compatible radios include: Edge, Onyx, Onyx EZ, Onyx Plus, Xpress RCi, XpressRC and XpressR.



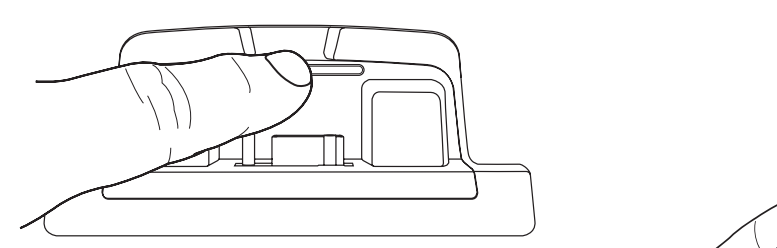
**If you have a Sirius Radio:** If your Radio is branded as **Sirius\***, select the Radio Dock Adapter that is marked **SIRIUS** on the back of the adapter. Compatible radios include: Sportster 5/6, Starmate 3/4/5/6/7/8, Stratus 3/5/6/7.



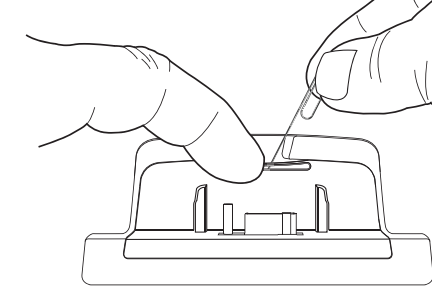
**B.** Orient and place the Radio Dock Adapter that you selected into the Vehicle Dock. Be sure the adapter is centered, and is seated all the way down into the dock.



**C.** Once the adapter is seated correctly in the Vehicle Dock, gently press the top of the adapter against the dock with your finger until it clicks into place. The Radio Dock Adapter is now installed.



Should it become necessary to remove the Radio Dock Adapter from the Vehicle Dock, use your fingernail to gently press down on the top of the adapter, and then use a long thin object such as a paper clip, a screw driver, or something similar to pry the adapter away until it releases from the dock. Then lift the adapter up and out of the dock.



\*If you are unsure whether your Radio is an XM or Sirius Radio, check the label on the back of the Radio. If the label on your Radio says XM Radio ID or Radio ID, and has an 8-digit alphanumeric number, it is an XM Radio. If the label on your Radio says Sirius ID, SID, or ESN, and has a 12-digit numeric number, it is a Sirius Radio.

# 2 Find a Location for the Vehicle Dock and Mount it

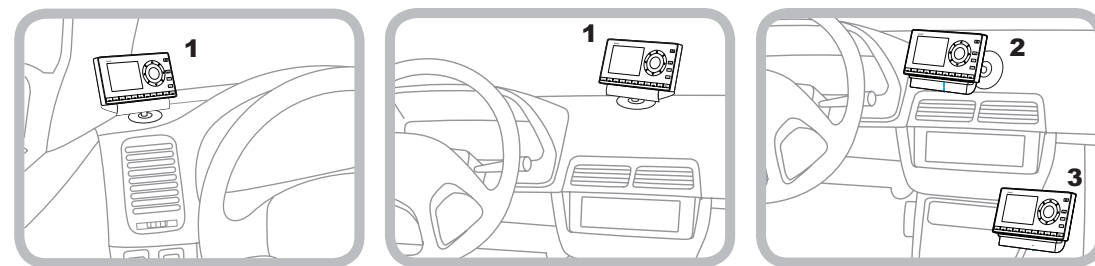
Select either the **Dash Mount** or the **Vent Mount** method for mounting the Vehicle Dock. You will need a phillips screwdriver to complete the installation.

**NOTE:** Your Radio may be a different model than the Radio shown here.  
**TIP:** You can take advantage of the wire guide channel across the back of the Vehicle Dock to organize the wires which connect to the dock.

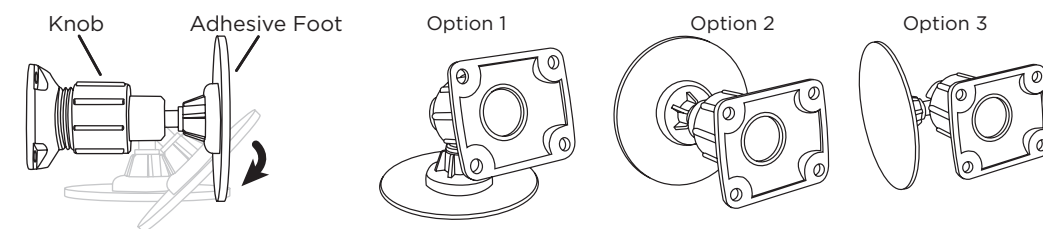
## Dash Mount Method:

**IMPORTANT:** The air temperature needs to be at least 15.5°C to install the Dash Mount. If needed, turn on the heater in your vehicle.

**A.** Select a flat surface for the Dash Mount with ample room for the Vehicle Dock and Radio. Avoid mounting on leather surfaces. Choose a location that doesn't interfere with the driver's vision or access to driving controls, one that won't interfere with the deployment of airbags or other safety equipment, and makes your Radio easily accessible for operation. (Airbag locations are typically marked with "SRS" logos.)



**B.** Orient the adhesive foot so that your Radio is easily accessible. Loosen the knob and adjust the adhesive foot to position **1**, **2**, or **3**, and then tighten it.

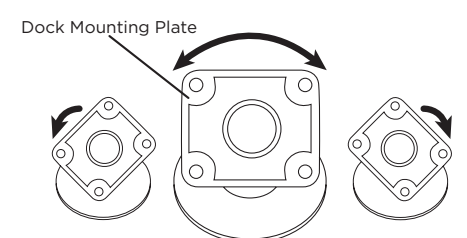


**C.** Attach the Dash Mount to the *PowerConnect* Vehicle Dock using the 4 provided screws. If you plan to use the wire guide channel across the back of the Vehicle Dock to organize the wires, do not fully tighten the screws. If not, tighten the screws.

**D.** Clean the mounting surface in the vehicle with the alcohol preparation pad and let it dry thoroughly.

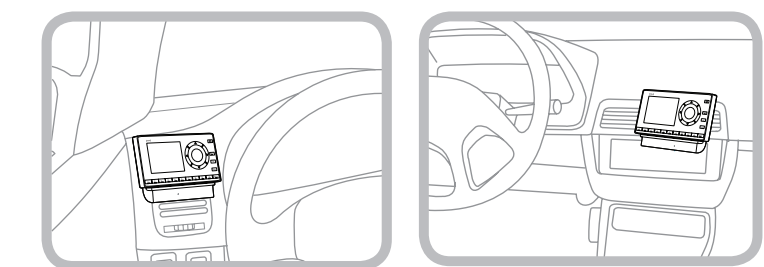
**E.** Once the surface is dry, remove the adhesive liner. Press and hold the Dash Mount in place for 30 seconds. Allow the adhesive to cure for at least 2-4 hours.

**F.** You can tilt the dock mounting plate in your preferred direction. (Note that for clarity the illustration does not show the Vehicle Dock attached to the Dash Mount.)

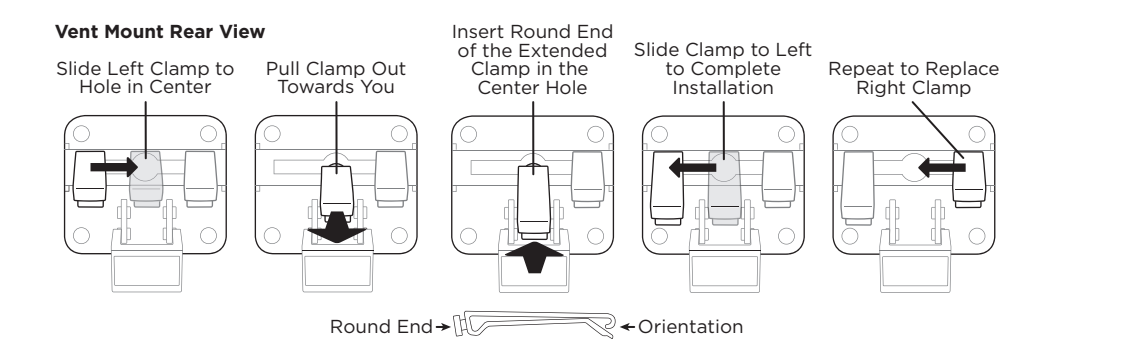


## Vent Mount Method:

**A.** Select a vent with ample room for the Vehicle Dock and Radio, one that won't interfere with the deployment of airbags or other safety equipment, and makes your Radio easily accessible for operation. (Airbag locations are typically marked with "SRS" logos.)



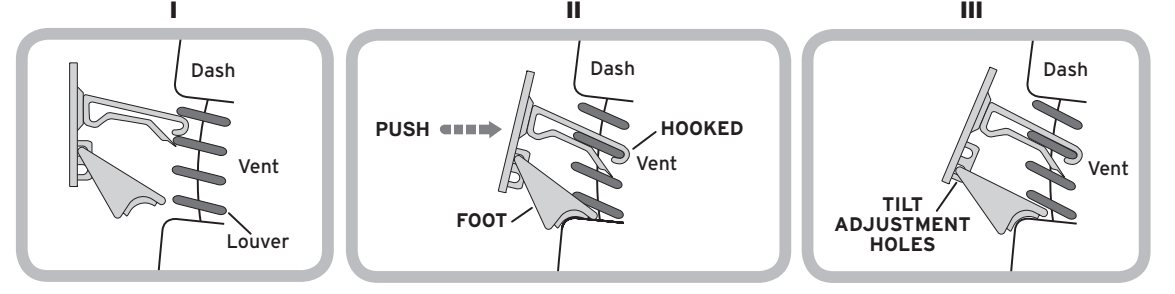
**B.** Some vents have recessed louvers. If yours are recessed, remove the regular vent clamps and install the extended vent clamps.



**C.** Attach the Vent Mount to the *PowerConnect* Vehicle Dock using the 4 provided screws. If you plan to use the wire guide channel across the back of the Vehicle Dock to organize the wires, do not fully tighten the screws. If not, tighten the screws.

**D.** Install the Vent Mount onto the vehicle vent. (Note that for clarity the illustrations below do not show the Vehicle Dock attached to the Vent Mount.)

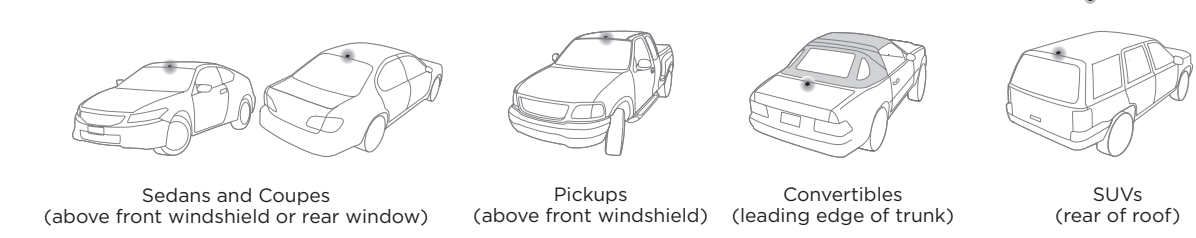
- i.** Insert the vent mount into the vent opening.
- ii.** Push until hooked on the rear of the vent louver. Rest the foot against the bottom of the vent.
- iii.** If necessary, adjust the tilt of the Vent Mount by repositioning the foot to a different tilt adjustment hole.



# 3 Mount the Magnetic Mount Antenna

**A.** Mount the Magnetic Mount Antenna outside your vehicle, on a clean and dry horizontal surface that will always face the sky.

**B.** Choose the location for the antenna according to your type of vehicle. Center it between the left and right sides, and away from other antennas.



**TIP:** Use the Alcohol Prep Pad to clean the surface.

# 4 Route the Antenna Cable

**NOTE:** These instructions are for a sedan or coupe where the antenna is mounted above the front windshield. The SiriusXM Universal Vehicle Kit User Guide SXDV3C has detailed antenna cable routing instructions for all types of vehicles. Go to [siriusxm.ca/userguides](http://siriusxm.ca/userguides) for the User Guide.

**A.** Tuck the antenna cable under the windshield rubber molding and run it to the nearest corner.

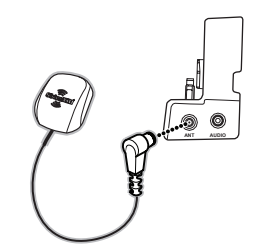
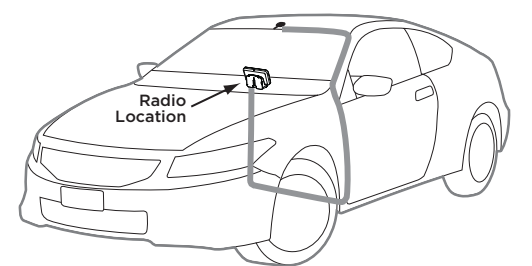
**B.** Route the cable out of the molding and into the rubber weather stripping around the door opening.

**C.** Lift the weather stripping. Tuck and run the cable inside it to the bottom of the door opening. Replace the weather stripping.

**D.** Pull the cable out and route it to your Radio.

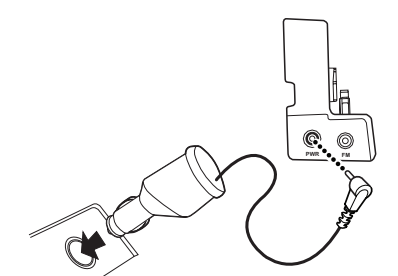
**E.** Plug the Magnetic Mount Antenna connector into the **silver ANT** connector on the side of the Vehicle Dock.

**TIP:** Include enough slack in your routing to accommodate open doors or the hood lid. Coil any excess cable in a hidden location and keep it away from any vehicle pedals or controls.

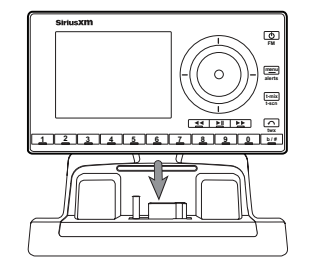


# 5 Connect the PowerConnect Power Adapter

**A.** Insert the *PowerConnect* Power Adapter into your vehicle's 12 volt power adapter or cigarette lighter socket. Plug the other end into the **red PWR** connector on the side of the *PowerConnect* Vehicle Dock.

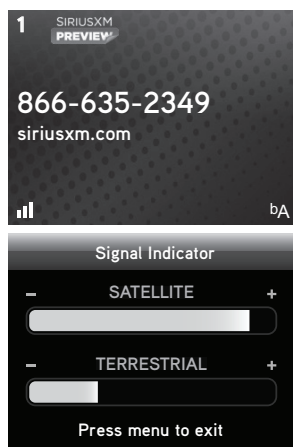


**B.** Place your Radio into the dock and press the **Power** button.



## 6 Verify Signal Reception

- Verify the signal reception by looking at the antenna signal strength bars on the screen. If the Radio is showing at least two vertical bars of antenna signal strength, continue with step 7. If not, be sure that you have mounted the antenna on the outside of the vehicle, as shown in step 3, and that the vehicle is parked outdoors with a clear view of the sky. Move the vehicle away from any obstructed area, for example, if you are parked in a garage, or parked near a large structure.
- Refer to your Radio's User Guide (go to [siriusxm.ca/userguides](http://siriusxm.ca/userguides)) for instructions on accessing the **Signal Indicator**, **Signal**, or **Antenna Aiming** screen of your Radio, to see a visual indication of signal strength.



\*The screens shown above are representative and may differ from the screens displayed on your Radio.

## Specifications

<b>System</b>	Power Requirements: 9-16 V DC, 500 mA (max) Operating Temperature: -4°F to +140°F (-20°C to +60°C) Audio Output: 1.0 Vrms (max)	Cable Length: Approximately 4.6 ft. (1.4 m)
<b>PowerConnect Dock</b>	Dimensions: 4.1 in (W) x 1.8 in (H) x 1.1 in (D) 105 mm (W) x 46 mm (H) x 28 mm (D) Weight (without adapter): 1.4 oz (40 g) Weight (with adapter): 1.5 oz (43 g) Audio Connector: 1/8 in (3.5 mm) female Antenna Connector: SMB male	<b>Vehicle Antenna</b> Type: SiriusXM Magnetic Mount Connector: SMB female, right angle Cable Length: Approximately 23 ft (7.0 m)
<b>PowerConnect Power Adapter</b>	Dimensions: 3.7 in (W) x 1.7 in (H) x 1.3 in (D) 94 mm (W) x 43 mm (H) x 34 mm (D) Weight: 2.4 oz (69 g) Input / Output: 9-16 V DC / 5 V DC, 1.5 A	<b>Aux In Cable</b> Connectors: 1/8 in (3.5 mm) stereo male to 1/8 in (3.5 mm) stereo male Cable Length: Approximately 4 ft (1.2 m)

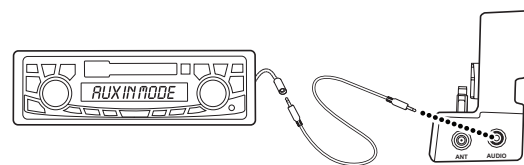
Self installation instructions and tips are provided for your convenience. It is your responsibility to determine if you have the knowledge, skills and physical ability required to properly perform an installation. SiriusXM shall have no liability for damage or injury resulting from the installation or use of any SiriusXM or third party products. It is your responsibility to ensure that all products are installed in adherence with local laws and regulations and in such a manner as to allow a vehicle to be operated safely and without distraction. SiriusXM product warranties do not cover the installation, removal or reinstallation of any product.

## 7 Connect the Audio

Decide on one of the following in-box audio connection options. You can also refer to the SiriusXM Universal Vehicle Kit User Guide SXDV3C for additional audio connection options, such as a cassette adapter or the FM Direct Adapter (FMDA) (both sold separately). Go to [siriusxm.ca/userguides](http://siriusxm.ca/userguides) for the User Guide.

**Option 1: Best:** Use the provided **Aux In Cable**, if your vehicle's stereo system has an auxiliary input jack.

- Plug one end of the cable into the **green AUDIO** connector on the side of the PowerConnect Vehicle Dock and the other end into the auxiliary input jack on the vehicle's stereo system.
- Turn on your vehicle's stereo system and set it to play from the auxiliary input source.
- You should hear the SiriusXM audio through your vehicle's stereo system.
- If you are using the wire guide channel across the back of the Vehicle Dock to organize the wires, place the wires in the guide and then tighten the 4 screws to securely attach the mount.

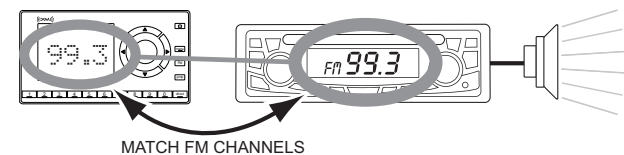


**TIP!** Refer to your vehicle's owner's manual to find the location of the auxiliary input jack, or consult the vehicle dealer.

**Option 2: Good:** Use the **PowerConnect** feature in your Radio. PowerConnect plays the audio through your vehicle's FM radio.

- Find an available FM Channel in Your Area. An available FM channel is one that's not being used by an FM radio station in your area. When you tune your FM radio to an available channel, you should only hear static or silence – not talk or music. We recommend one of the following methods to find an available FM channel:
  - Use the Sirius FM Frequency Finder at [siriusxm.ca/fm](http://siriusxm.ca/fm). Go to the website and enter your postal code. The FM Frequency Finder will suggest a list of available FM channels in your area. For convenience, write down or print out the list.  
OR
  - Manually tune through your local FM channels on your vehicle's FM radio. Turn on your vehicle's FM radio. Start at 88.1 and use the 'Manual' tune function on your vehicle's FM radio to tune through each FM channel one-by-one (88.1 followed by 88.3 etc.) to locate channels that aren't being used by a local FM radio station. Write down each FM channel that has only static or silence on it, until you reach 107.9. Once you have created your list of available FM channels, you will need to find the one that provides the best match for your Satellite Radio.
- Pick the first FM channel from your list. Turn on your vehicle's FM radio (if you have not already done so) and tune it to this FM channel.
- Set your Radio to transmit on the same FM channel. Refer to the User Guide and set your Satellite Radio to transmit on the same usable FM channel that you used in step B.
  - Tune your Satellite Radio to a favourite Sirius channel (or channel 184 if it's not yet activated).
  - You should hear Sirius audio through your vehicle's FM radio. If you are satisfied with the sound quality, you're done! Now sit back and enjoy Satellite Radio.
- If the selected FM channel doesn't work well for you, work down the list of FM channels until you find one that allows you to hear Sirius clearly. Each time, you will need to tune your vehicle's FM radio to the FM channel and then set your Radio to transmit on the same FM channel.

**TIP!** You may find an FM channel with static or silence on your vehicle's FM radio that does not work with your satellite Radio. It is possible that some type of inaudible interference is present that prevents reception of the Sirius broadcast. Your only options are to use another FM channel or a different audio connection method.



## Important Legal Information

© 2016 SiriusXM Canada Inc. "SiriusXM", the SiriusXM logo, channel names and logos are trademarks of Sirius XM Radio Inc. and are used under license. "NFL" and the NFL Shield design are trademarks of the National Football League. NASCAR® is a registered trademark of the National Association for Stock Car Auto Racing, Inc. The NBA and NBA member team identifications are the intellectual property of NBA Properties, Inc. and the respective NBA member teams. © 2016 NBA Properties, Inc. All rights reserved. NHL and the NHL Shield are registered trademarks of the National Hockey League. © NHL 2016. Elvis Radio logo © EPE Reg. U.S. Pat & TM Off. CFL is a registered trademark of the Canadian Football League. All other trademarks, service marks, images and logos are property of their respective owners and are used with permission. All Rights Reserved. Required subscription sold separately. Premier subscription required for some channels. Prices and programming is subject to change. See Customer Agreement for complete terms at [siriusxm.ca](http://siriusxm.ca).  
This Class B digital apparatus complies with Canadian ICES-003.  
IC STATEMENT: Operation is subject to the following two conditions: (1) this device may not cause interference, and (2) this device must accept any interference, including interference that may cause undesired operation of the device. For product available in the Canada market, only channel I-11 can be operated. Selection of other channels is not possible. This device and its antenna(s) must not be co-located or operation in conjunction with any other antenna or transmitter. To reduce potential radio interference to other users, the antenna type and its gain should be so chosen that the equivalent isotropically radiated power (e.i.r.p) is not more than that permitted for successful communication. IC Radiation Exposure Statement: This equipment complies with IC RSS-102 radiation exposure limits set forth for an uncontrolled environment. This equipment should be installed and operated with minimum distance 20cm between the radiator & your body.

## SiriusXM 12-Month Limited Warranty

### What This Warranty Covers

This warranty covers defects in material and workmanship for 12 months from the date of purchase by the original retail purchaser only. SiriusXM Canada Inc., at its sole option, will repair or replace the product with a new or reconditioned product without charge for parts and labour. Products replaced under this warranty become the property of SiriusXM. Replacement products are warranted to be free from defects for 30 days or the remainder of the original warranty, whichever is longer.

### What This Warranty Does Not Cover

This warranty does not cover: products sold as used, as is, reconditioned or refurbished; software stored on internal or removable memory; non-rechargeable batteries, surface preparation cleaners, adhesive pads, fasteners, and ear-buds; costs incurred for installation, removal or reinstallation of the product; correction of installation problems, such as elimination of externally generated static or noise and antenna placement and aiming; defects or damage caused by alteration, improper installation or removal, use of third party accessories, mishandling, misuse, neglect, accident, power surges or acts of nature.

### How to Obtain Warranty Service

To obtain warranty service, please call Customer Care at 1-888-539-7474. You will be required to provide proof of purchase and a description of the defect. You must prepay the cost of shipping the product to an approved service center.

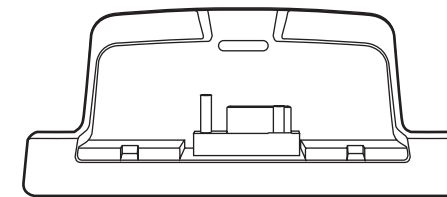
### LIMITATIONS OF LIABILITY

THE LIABILITY OF SIRIUSXM UNDER THIS WARRANTY IS LIMITED TO REPAIR OR REPLACEMENT AS PROVIDED ABOVE AND IN NO EVENT SHALL THE LIABILITY EXCEED THE PURCHASE PRICE PAID FOR THE PRODUCT. ANY IMPLIED WARRANTIES, INCLUDING ANY IMPLIED WARRANTY OF MERCHANTABILITY OR FITNESS FOR A PARTICULAR PURPOSE, SHALL BE LIMITED TO THE DURATION OF THIS WRITTEN WARRANTY. ANY ACTION FOR BREACH OF WARRANTY, INCLUDING BREACH OF ANY IMPLIED WARRANTY OF MERCHANTABILITY, MUST BE BROUGHT WITHIN 48 MONTHS FROM THE DATE OF ORIGINAL PURCHASE. IN NO CASE SHALL SIRIUSXM BE LIABLE FOR ANY CONSEQUENTIAL OR INCIDENTAL DAMAGES FOR BREACH OF THIS OR ANY OTHER WARRANTY, EXPRESS OR IMPLIED. SOME PROVINCES DO NOT ALLOW LIMITATIONS ON HOW LONG AN IMPLIED WARRANTY LASTS OR THE EXCLUSION OR LIMITATION OF INCIDENTAL OR CONSEQUENTIAL DAMAGES, SO THE ABOVE LIMITATIONS OR EXCLUSIONS MAY NOT APPLY TO YOU. This warranty gives you specific legal rights and you may also have other rights, which vary from province to province.

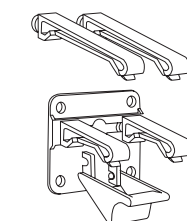
If you experience problems with the operation or performance of your product  
**DO NOT RETURN THIS PRODUCT TO YOUR RETAILER**  
Call Customer Care at 1-888-539-7474

## What's in the Box?

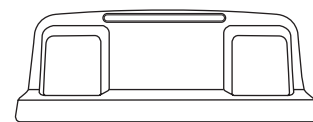
**CAUTION:** Do not attempt to install, activate, or adjust any of the setting options described in this Quick Start Guide unless your vehicle is parked in a safe location.



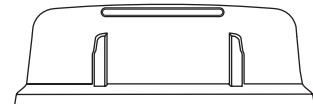
PowerConnect™ Vehicle Dock



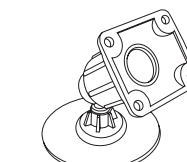
Vent Mount and Extended Vent Clamps



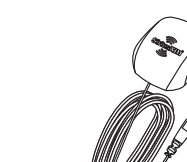
XM Radio Dock Adapter  
Compatible with Edge, Onyx, Onyx EZ, Onyx Plus, Xpress RCi, XpressRC and XpressR



Sirius Radio Dock Adapter  
Compatible with Sportster 5/6, Starmate 3/4/5/6/7/8, Stratus 3/5/6/7



Dash Mount



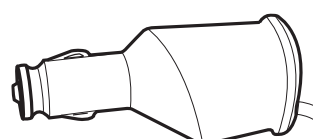
Magnetic Mount Antenna



Screws (4)



Antenna & Dash Mount Alcohol Preparation Pads



PowerConnect Power Adapter



Aux In Cable