

1 Pick a Spot for Your Radio

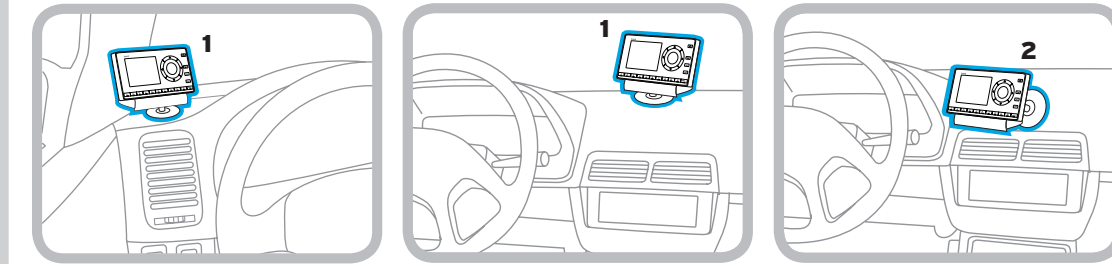
Select either the **Dash Mount** method or the **Window Mount** method for your Radio. You will need a phillips-head screwdriver to complete the installation.

IMPORTANT! To make the cable connections easier, wait until after you have connected all the cables to the dock before you attach the dock to the dash or to a vent.

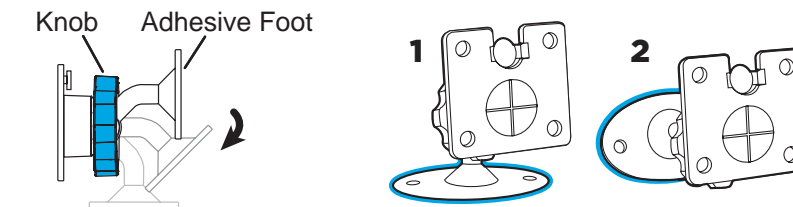
Dash Mount Method:

IMPORTANT! The air temperature needs to be at least 60° F to install the Dash Mount. If needed, turn on the heater in your vehicle.

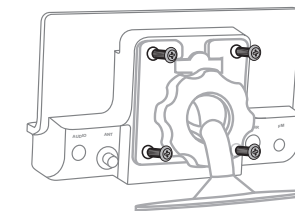
- A.** Select a flat surface for the Dash Mount with ample room for your Radio. Avoid mounting on leather surfaces. Choose a location that doesn't interfere with the driver's vision or access to driving controls, one that won't interfere with the deployment of airbags or other safety equipment, and makes your Radio easily accessible for operation. (Airbag locations are typically marked with "SRS" logos.)



- B.** Orient the adhesive foot so that your Radio is easily accessible. Loosen the knob and adjust the adhesive foot to position **1** or **2**, and then tighten it.



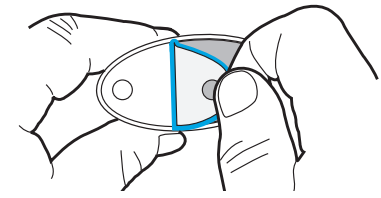
- C.** Attach the Dash Mount to the PowerConnect Vehicle Dock using the 4 provided screws.



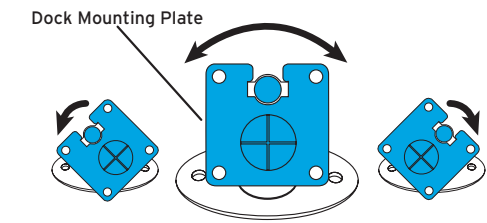
- D.** Before you attach the Dash Mount to the dash, skip ahead and finish the remainder of the vehicle installation so that the cables are attached to the dock.

- E.** Once the cables have been attached to the dock, clean the mounting surface in the vehicle with the alcohol preparation pad and let it dry thoroughly.

- F.** Peel off the adhesive liner. Position, press, and hold the Dash Mount in place for 30 seconds. Allow the adhesive cure for 2-4 hours.



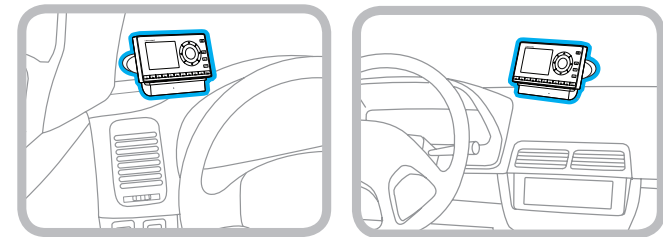
- G.** You can tilt the dock mounting plate in your preferred direction. (Note that for clarity the illustration does not show the Vehicle Dock attached to the Dash Mount.)



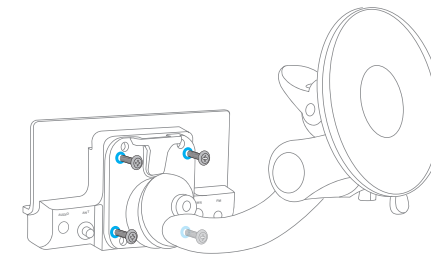
Window Mount Method:

IMPORTANT! States or localities may prohibit driving with a suction mount on the windshield. When driving in these areas, the dash or vent mounting option should be used instead. Check your state or local laws for any applicable restrictions. Sirius XM Radio Inc. does not take any responsibility for any fines, penalties, or damages that may be incurred as a result of disregarding this notice.

- A.** Select a location on the windshield with ample room for your Radio, one that doesn't interfere with the driver's vision or access to driving controls, that won't interfere with the deployment of airbags or other safety equipment, and makes your Radio easily accessible for operation. (Airbag locations are typically marked with "SRS" logos.)

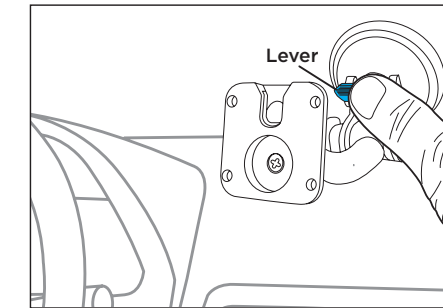


- B.** Attach the Window Mount to the PowerConnect Vehicle Dock using the 4 provided screws.

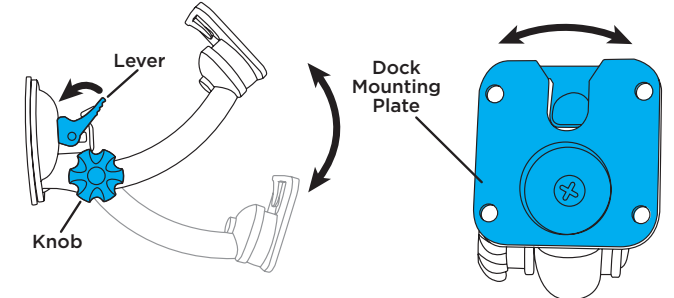


- C.** Clean the window surface with the alcohol preparation pad and let it dry thoroughly.

- D.** Press and hold the mount against the windshield. Then press the lever all the way down to attach the Window Mount to the windshield. (Note that for clarity the illustrations do not show the Vehicle Dock attached to the Window Mount.)



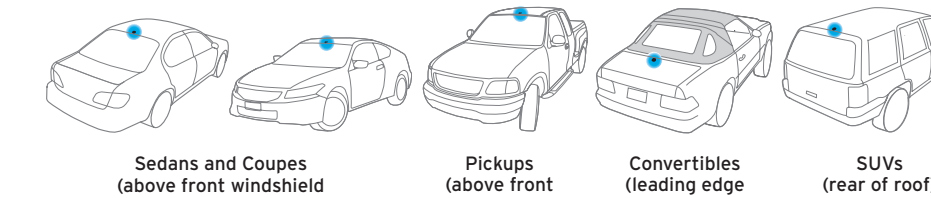
- E.** Loosen the knob on the Window Mount to adjust the height of the Radio for the best view. Once the height is correct, tighten the knob. The dock mounting plate can be swiveled to the left or right, and adjusted up or down, to optimize the driver's view of the Radio.



2 Mount the Magnetic Mount Antenna

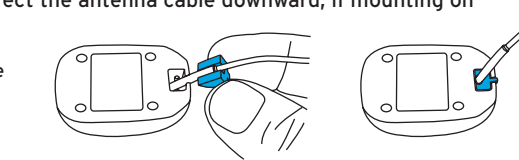
- A.** Mount the Magnetic Mount Antenna outside your vehicle, on a clean and dry horizontal surface that will always face the sky.

- B.** Choose the location for the antenna according to your type of vehicle. Center it between the left and right sides, and away from other antennas.



- C.** Install the Cable Routing Adapter to direct the antenna cable downward, if mounting on an edge.

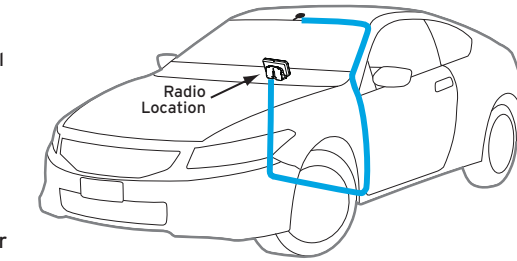
TIP: Use the Alcohol Prep Pad to clean the surface.



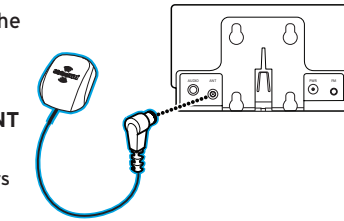
3 Route the Antenna Cable

NOTE: These instructions are for a sedan or coupe where the antenna is mounted above the front windshield. The User Guide has detailed antenna cable routing instructions for all types of vehicles, beginning on page 26.

- A.** Tuck the antenna cable under the windshield rubber molding and run it to the nearest corner.
- B.** Route the cable out of the molding and into the rubber weather stripping around the door opening.
- C.** Lift the weather stripping. Tuck and run the cable inside it to the bottom of the door opening. Replace the weather stripping.
- D.** Pull the cable out and route it to the Radio.
- E.** Plug the Magnetic Mount Antenna connector into the silver ANT connector at the rear the PowerConnect Vehicle Dock.



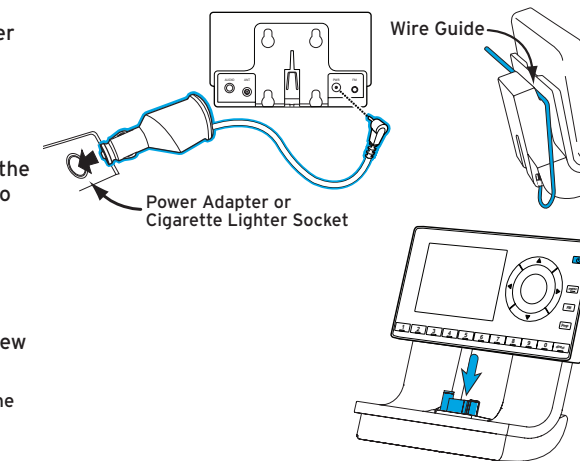
TIP: Include enough slack in your routing to accommodate open doors or the hood lid. Coil any excess cable in a hidden location and keep it away from any vehicle pedals or controls.



4 Connect the PowerConnect Power Adapter

- A.** Insert the PowerConnect Power Adapter into your vehicle's cigarette lighter or power adapter socket.
- B.** Plug the other end into the red PWR connector on the rear of the Vehicle Dock. Use the wire guide on the top of the dock to organize the wires connected to the dock.
- C.** Place your Radio into the dock.
- D.** Power on your Radio by pressing the Power button. Ensure the vehicle is outside and the antenna has a clear view of the sky.

IMPORTANT! Don't attach the dock to the mount just yet.

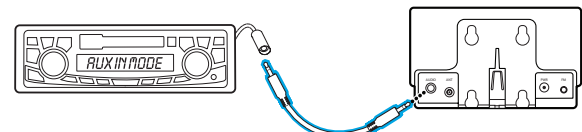


5 Connect the Audio

Decide on one of the following in-box audio connection options. Refer to "Step 6: Connect the Audio" on page 39 of the User Guide for details including other connection options.

Option 1: Best: Use the provided **Aux In Cable**, if your vehicle's stereo system has an auxiliary input jack.

- Plug one end of the cable into the **green AUDIO** connector on the **PowerConnect Vehicle Dock** and the other end into the auxiliary input jack on the vehicle's stereo system.
- Turn on your vehicle's stereo system and set it to play from the auxiliary input source.
- You should now hear the SiriusXM audio.
- Go back to Step 1 "Pick a Spot for Your Radio" and finish installing the Dash or Window Mount. Then the installation is complete.

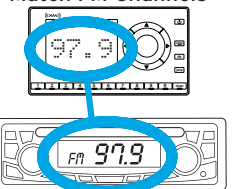


TIP! Refer to your vehicle's owner's manual to find the location of the auxiliary input jack, or consult the vehicle dealer.

Option 2: Good: Use the **PowerConnect™** feature in your Radio. **PowerConnect** plays the SiriusXM audio through your vehicle's FM radio.

- Find and make a list of all available FM channels in your area that are not being used by an FM radio station.
- Pick the first FM channel on your list. Tune your vehicle's FM radio to this FM channel.
- Set your Radio to transmit on the same FM channel that you have selected in step B. You may need to turn On the FM Transmitter in your Radio first. Refer to the User Guide that accompanied your Radio.
- You should hear the SiriusXM audio through your vehicle's FM radio. If you are satisfied with the sound quality, the installation is complete.
- If you are not satisfied, move to the next FM channel on your list and repeat the process. Continue until you have found an FM channel with which you are satisfied.
- Go back to Step 1 "Pick a Spot for Your Radio" and finish installing the Dash or Window Mount. Then the installation is complete.

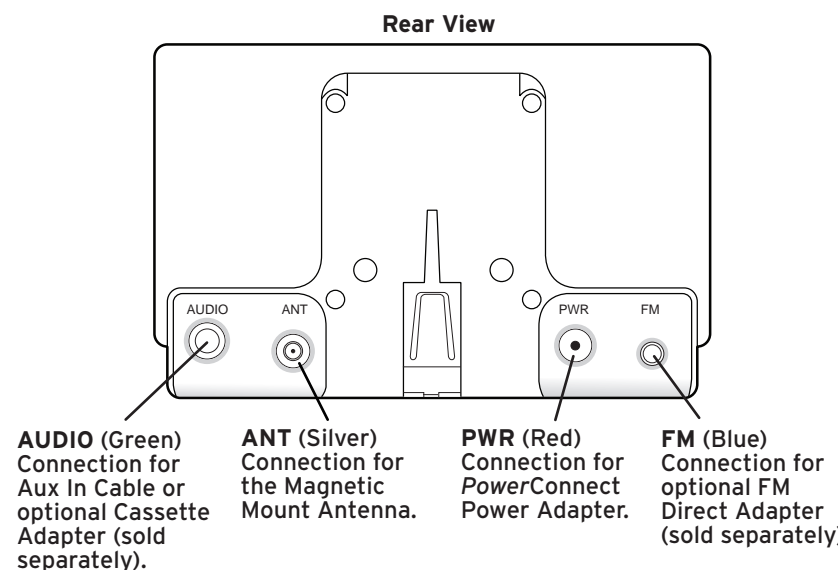
Match FM Channels



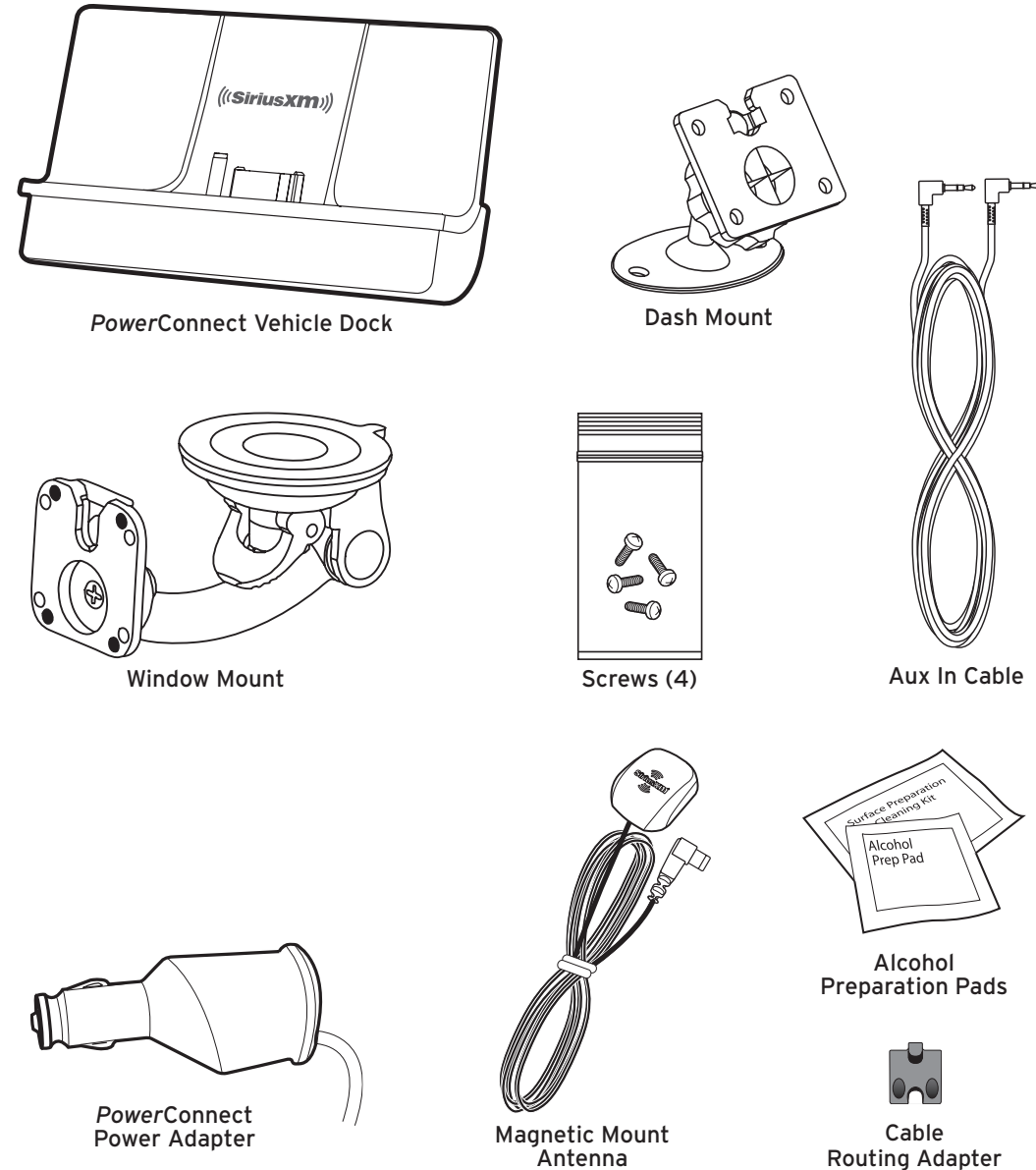
Vehicle Dock

Color-Coded Connections

The color-coded Vehicle Dock makes it simple to connect. Just match the colors on the cable ends to the colors on the dock to see what goes where.



What's in the Box?



Self installation instructions and tips are provided for your convenience. It is your responsibility to determine if you have the knowledge, skills and physical ability required to properly perform an installation. SiriusXM shall have no liability for damage or injury resulting from the installation or use of any SiriusXM or third party products. It is your responsibility to ensure that all products are installed in adherence with local laws and regulations and in such a manner as to allow a vehicle to be operated safely and without distraction. SiriusXM warranties do not cover the installation, removal or reinstallation of any product.



Quick Start Guide

Vehicle Kit For XM Radios

www.siriusxm.ca

Sirius XM Canada Inc.
135 Liberty St. - 4th floor
Toronto, Ontario, M6K 1A7

1-877-438-9677

© 2012 SIRIUS XM Radio Inc.
XDPIV10SG 120906a